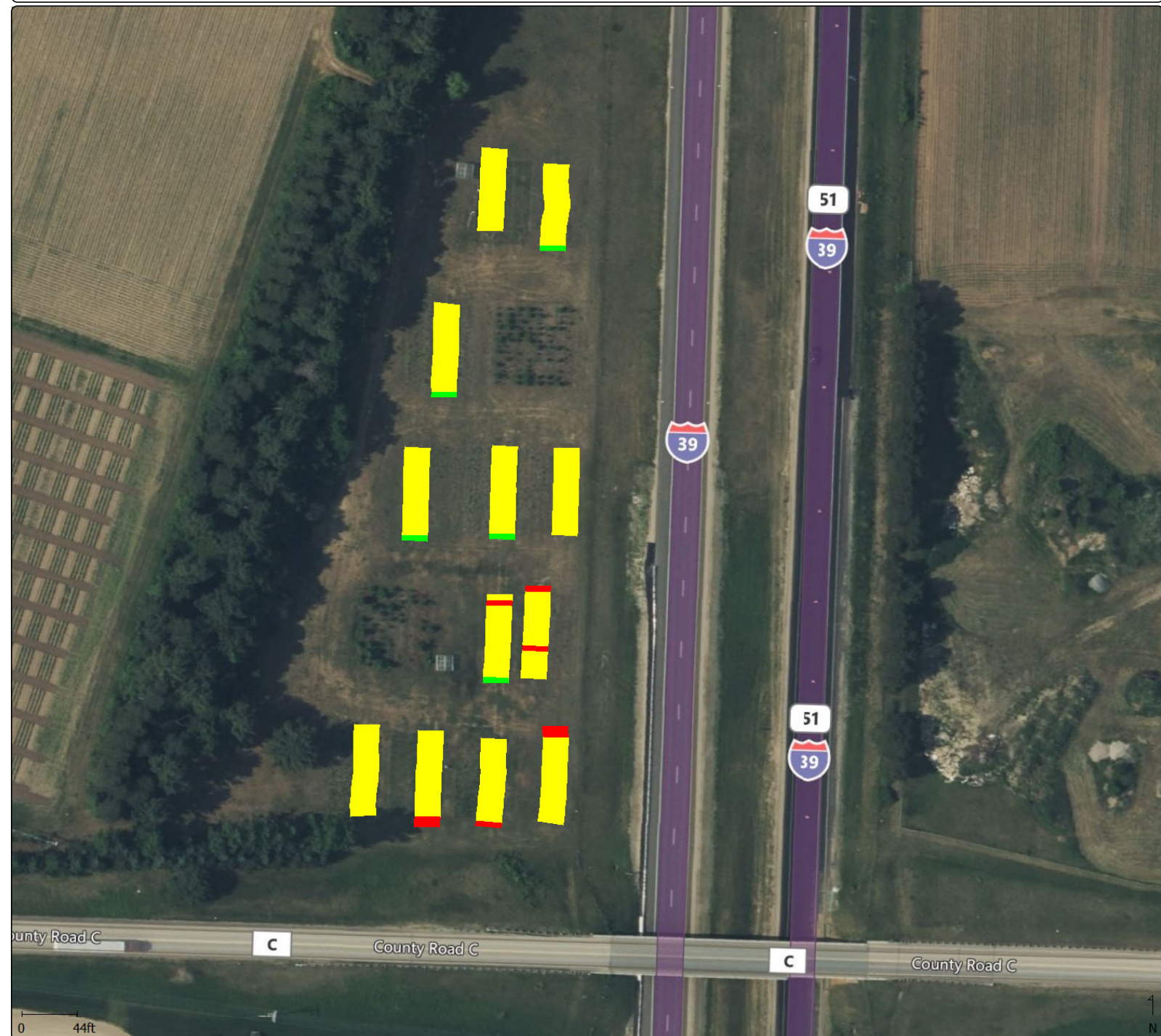


Broadcast Application with Gandy 2026 - WC(ESN urea)



Grower : GLBRC
 Farm : MLE
 Field : WC
 Year : 2026
 Operation : Broadcast Application with Gandy
 Crop / Product : ESN urea
 Op. Instance : Seeding
 Area : 0.622 ac
 Est. Amount : 70.71 lb
 Avg. Rate : 113.64 lb/ac
 Start Date : 5/26/2026
 End Date : 5/26/2026
 Working Time : 0.056 h
 Avg. Productivity : 7.273 ac/h
 GPS Count : 202

Rate (Mass)
(lb/ac)

■	124.00 - 182.25 (0.010 ac)
■	104.00 - 124.00 (0.375 ac)
■	6.55 - 104.00 (0.016 ac)

