

Field: 47-6

Client: MSU-Kellogg Farm | Farm: Ford



2023 Hi-cal Application: Target Rate

Start: Dec 15, 2023 10:37 AM

End: Dec 15, 2023 12:24 PM

Work Totals

Area Applied: 31 ac

Applied Total: 71,806 lb

Target Total: 73,834.37 lb

Applied Rate: 2,314.4 lb/ac

Target Rate: 2,379.8 lb/ac

Performance

Speed: 10 mi/hr

Working Time: 42 mins

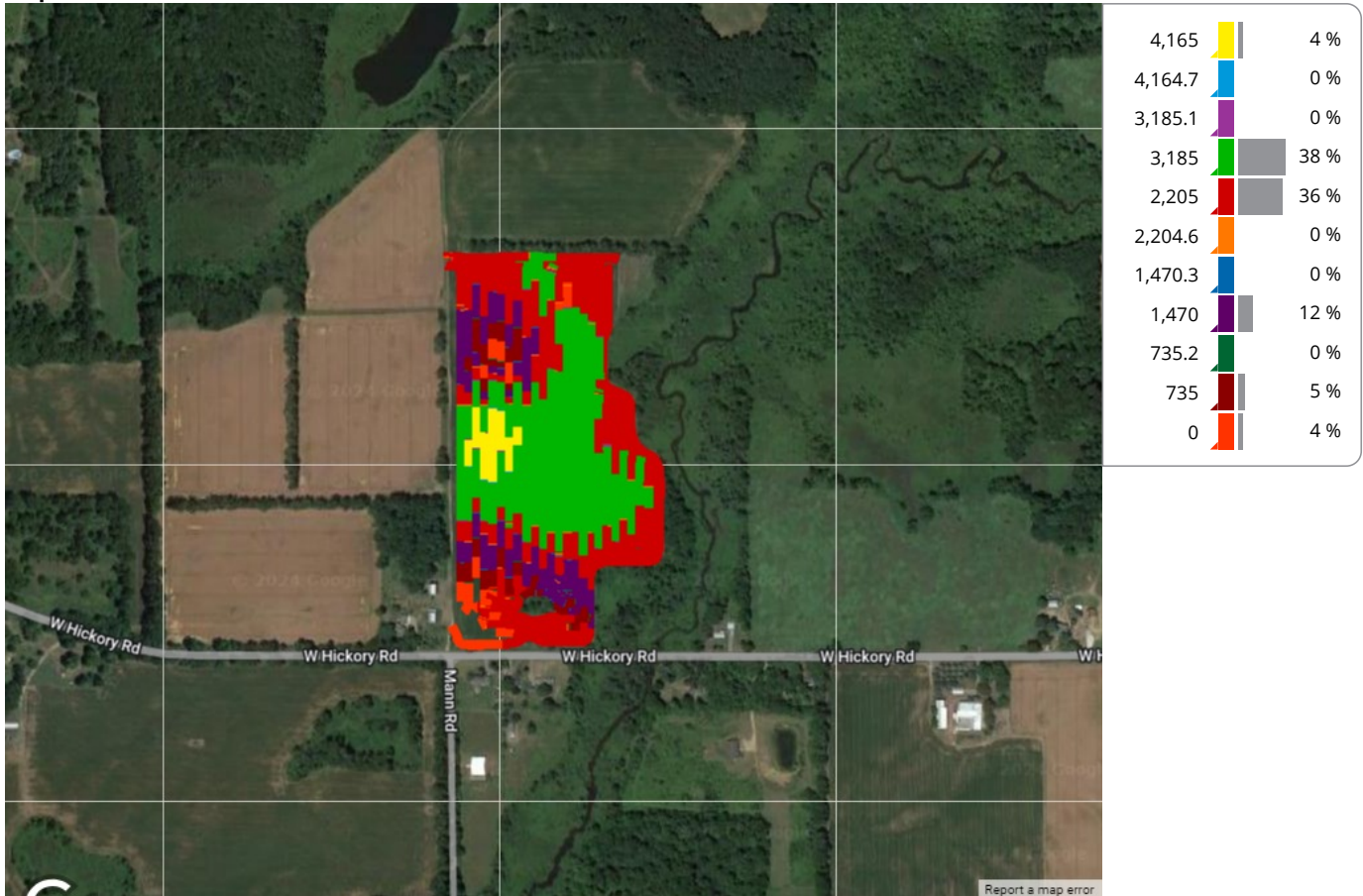
Fuel: 0.1 gal/ac

Productivity: 43.8 ac/hr

Total Fuel: 3.3 gal

Fuel: 4.7 gal/hr

Map: Overview



Equipment

MSUKELLOGDAIRY1L06155MAHG89278 1L06155MAHG892788

Products

Hi-cal