

Field: 47-5

Client: MSU-Kellogg Farm | Farm: Ford



2023 Hi-cal Application: Target Rate

Start: Dec 15, 2023 12:24 PM

End: Dec 15, 2023 1:12 PM

Work Totals

Area Applied: 20.9 ac

Applied Total: 44,238 lb

Target Total: 45,175.28 lb

Applied Rate: 2,115.3 lb/ac

Target Rate: 2,160.1 lb/ac

Performance

Speed: 10.3 mi/hr

Working Time: 28 mins

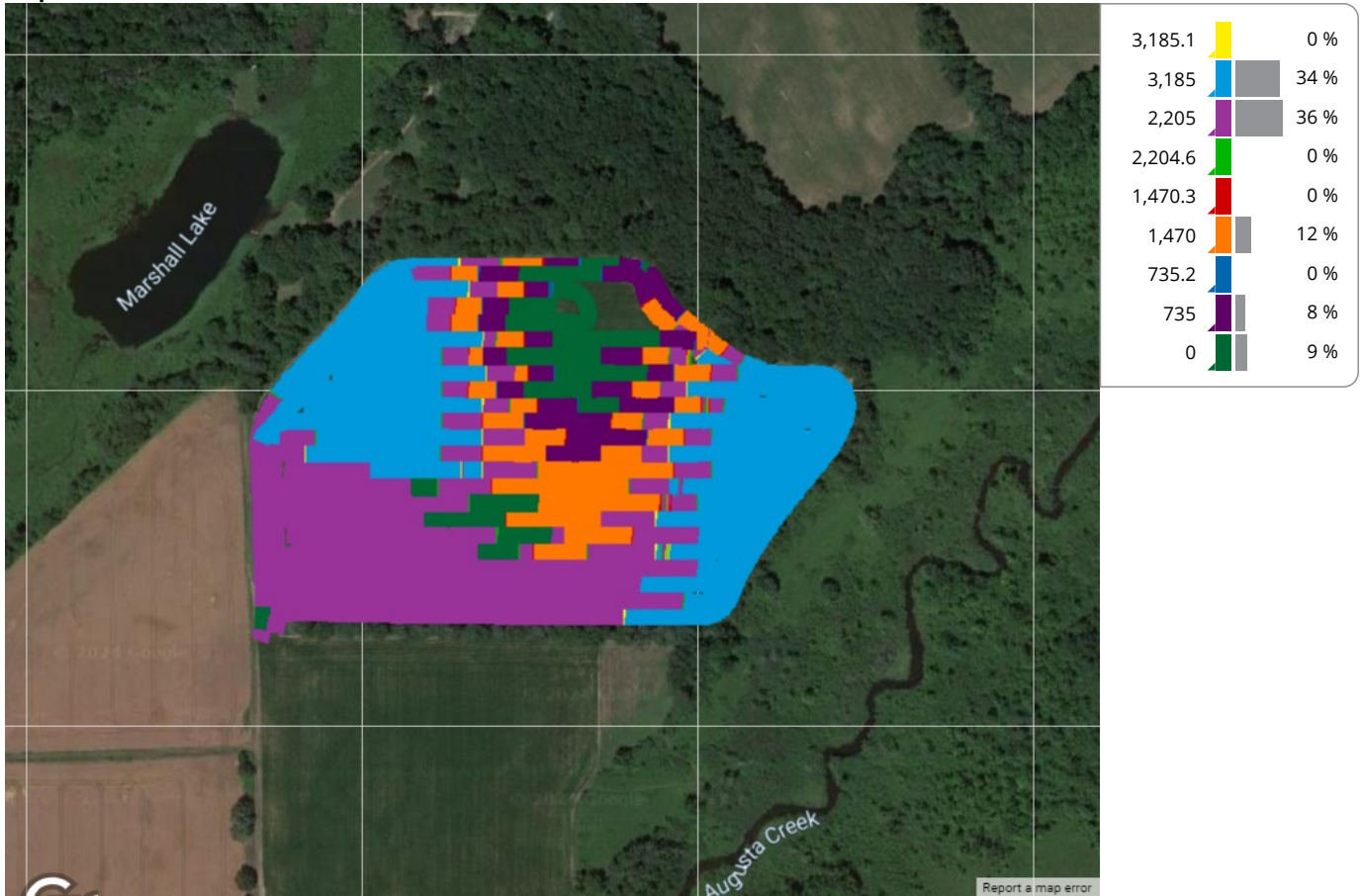
Fuel: 0.1 gal/ac

Productivity: 44.7 ac/hr

Total Fuel: 2.2 gal

Fuel: 4.8 gal/hr

Map: Overview



Equipment

MSUKELLOGDAIRY1L06155MAHG89278 1L06155MAHG892788

Products

Hi-cal