

Field: 44-6

Client: MSU-Kellogg Farm | Farm: Marshall's



2023 Hi-cal Application: Target Rate

Start: Dec 15, 2023 8:57 AM

End: Dec 15, 2023 10:31 AM

Work Totals

Area Applied: 27.3 ac

Applied Total: 81,691 lb

Target Total: 83,664.21 lb

Applied Rate: 2,992.2 lb/ac

Target Rate: 3,064.5 lb/ac

Performance

Speed: 8.9 mi/hr

Working Time: 41 mins

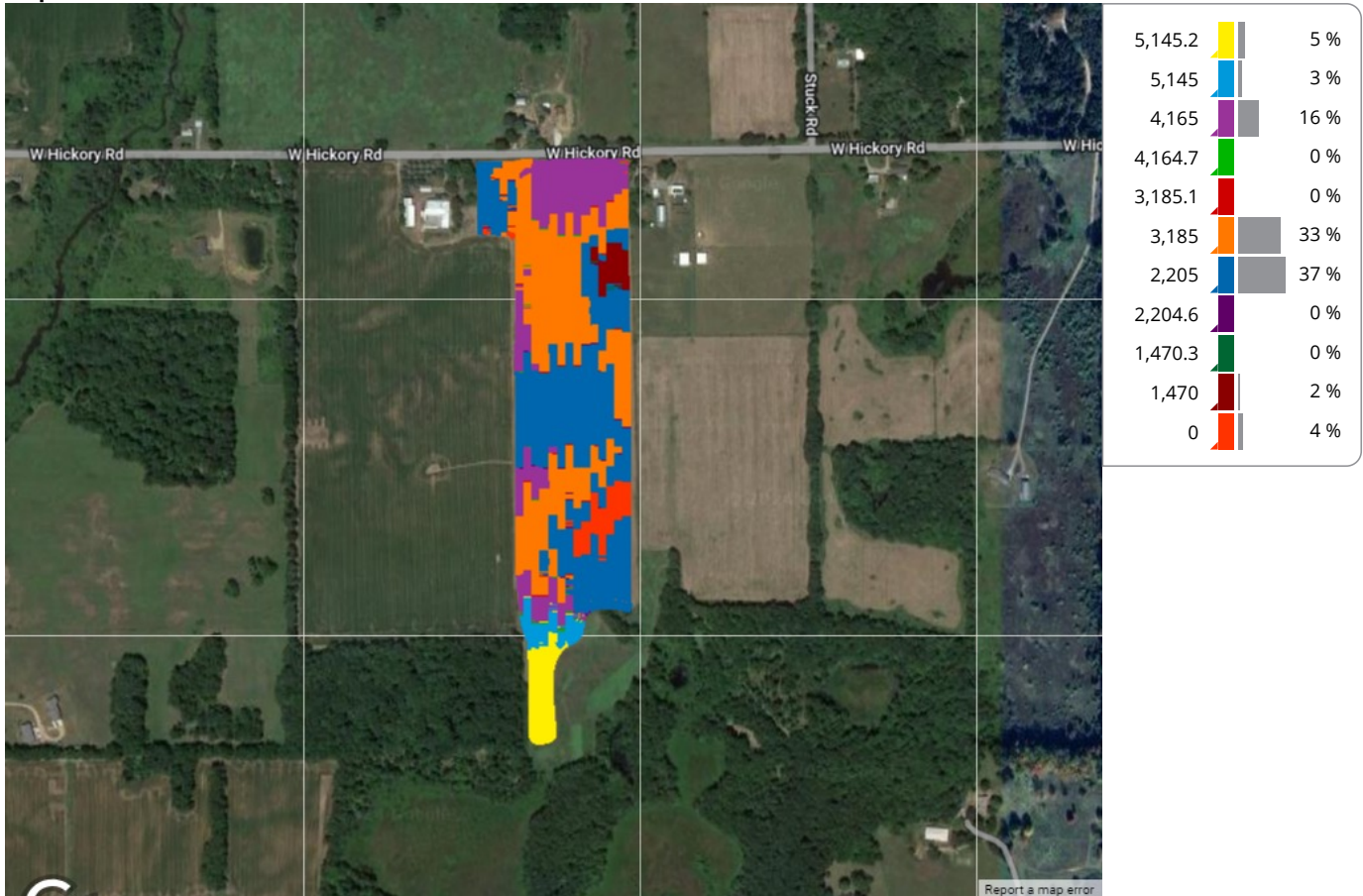
Fuel: 0.1 gal/ac

Productivity: 39 ac/hr

Total Fuel: 3.5 gal

Fuel: 5 gal/hr

Map: Overview



Equipment

MSUKELLOGDAIRY1L06155MAHG89278 1L06155MAHG892788

Products

Hi-cal