

Field: 27-2-4

Client: MSU-Kellogg Farm | Farm: Farm Systems Center



2023 Hi-cal Application: Target Rate

Start: Dec 13, 2023 5:34 PM

End: Dec 13, 2023 6:02 PM

Work Totals

Area Applied: 7.8 ac

Applied Total: 30,961 lb

Target Total: 32,566.46 lb

Applied Rate: 3,953.8 lb/ac

Target Rate: 4,158.8 lb/ac

Performance

Speed: 8.5 mi/hr

Working Time: 12 mins

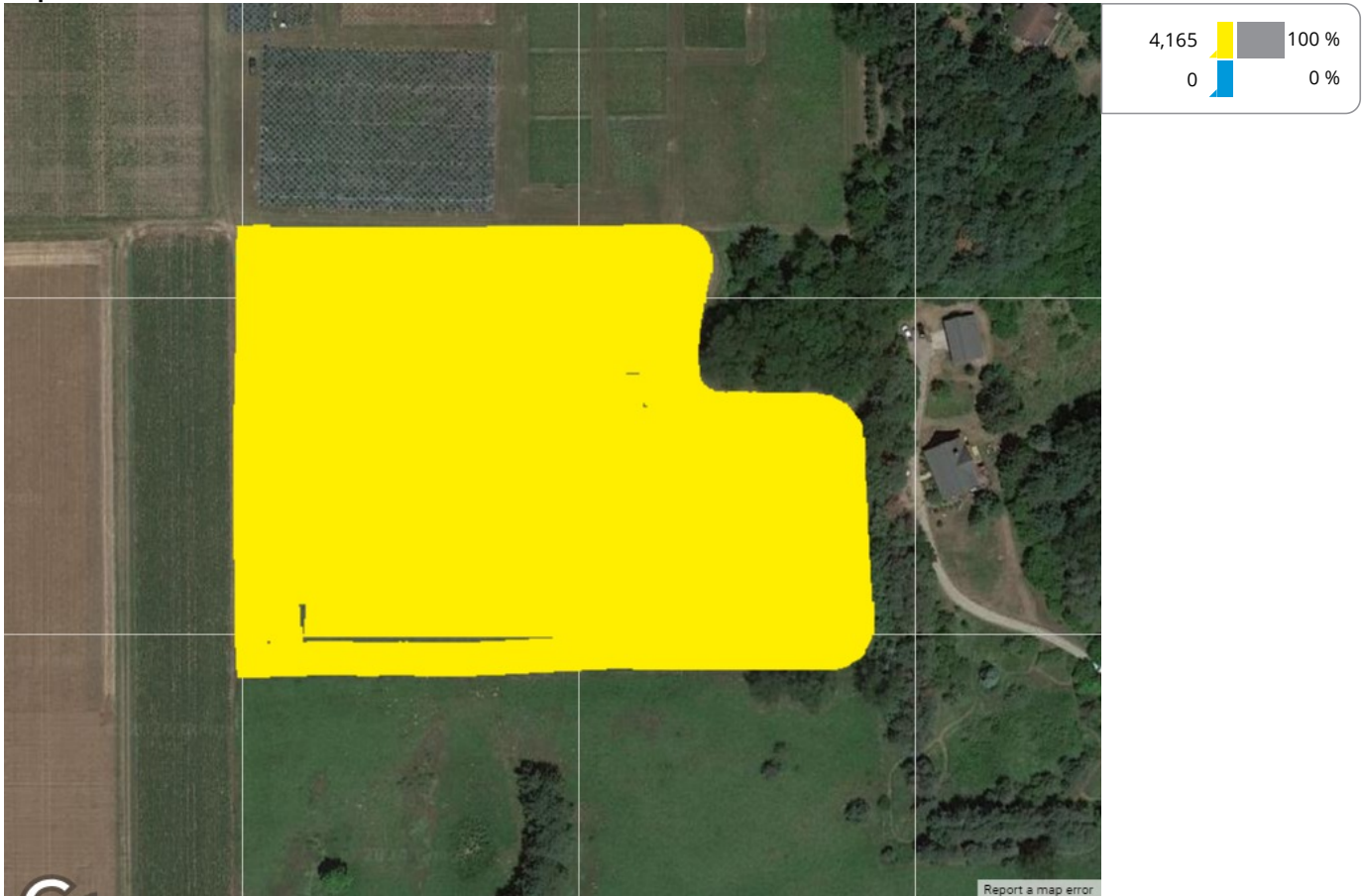
Fuel: 0.1 gal/ac

Productivity: 36.9 ac/hr

Total Fuel: 1.2 gal

Fuel: 5.5 gal/hr

Map: Overview



Equipment

MSUKELLOGDAIRY1L06155MAHG89278 1L06155MAHG892788

Products

Hi-cal