

Field: 94

Client: MSU-Kellogg Farm | Farm: LTAR



2023 10.5-0-30-12s Application: Applied Rate

Start: Apr 10, 2023 10:43 AM

End: Apr 10, 2023 11:04 AM

Work Totals

Area Applied: 19.9 ac

Applied Total: 3,905 lb

Target Total: 3,969.6 lb

Applied Rate: 196.6 lb/ac

Target Rate: 199.9 lb/ac

Performance

Speed: 10.9 mi/hr

Working Time: 15 mins

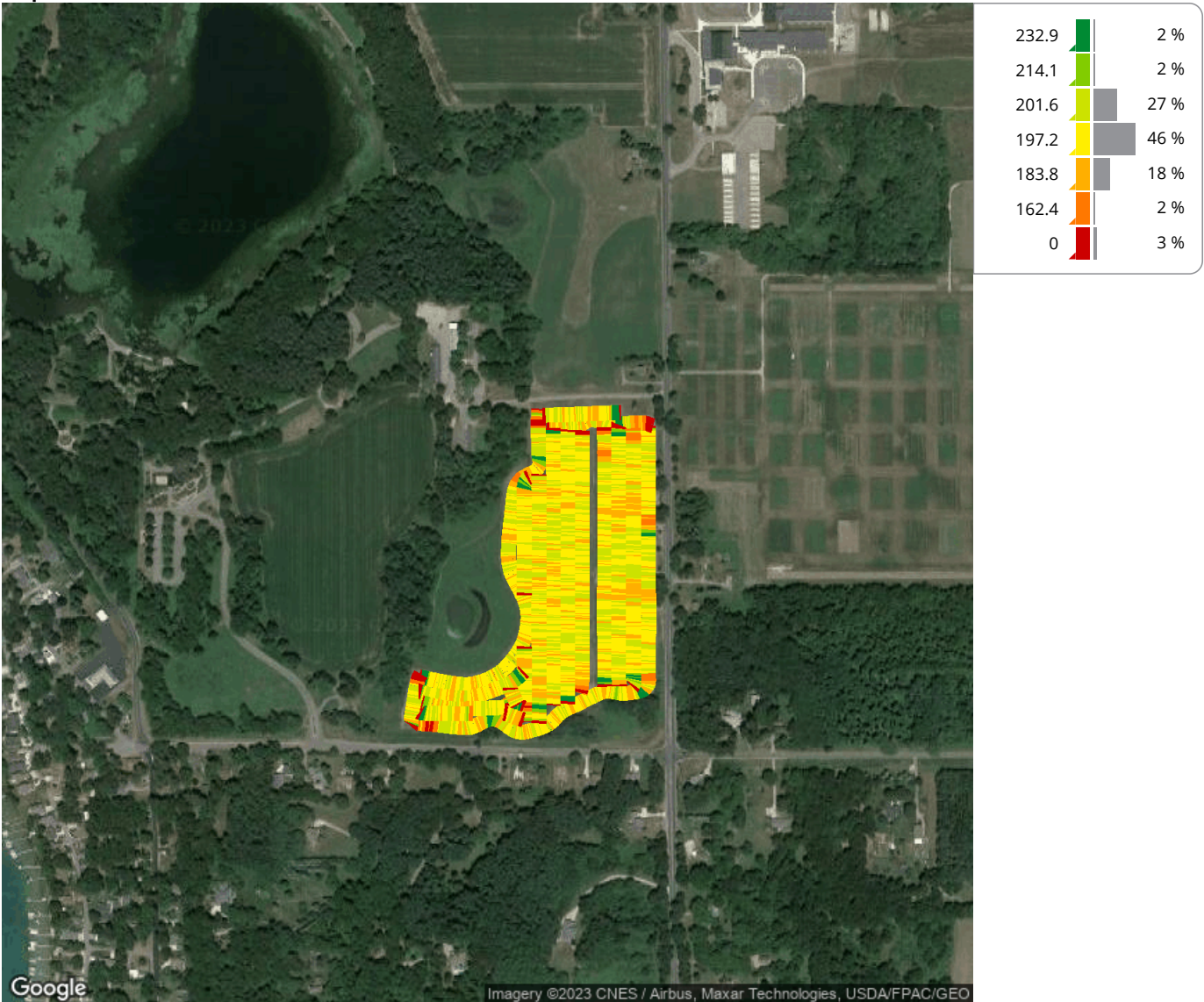
Fuel: 0.1 gal/ac

Productivity: 79.1 ac/hr

Total Fuel: 1.1 gal

Fuel: 4.5 gal/hr

Map: Overview



Equipment

MSUKELLOGDAIRY1L06155MAHG89278 1L06155MAHG892788

Products

10.5-0-30-12s