

Field: 87

Client: MSU-Kellogg Farm | Farm: LTAR



2023 10.5-0-30-12s Application: Applied Rate

Start: Apr 10, 2023 10:18 AM

End: Apr 10, 2023 10:33 AM

Work Totals

Area Applied: 11.4 ac

Applied Total: 2,233 lb

Target Total: 2,269.8 lb

Applied Rate: 196.6 lb/ac

Target Rate: 199.9 lb/ac

Performance

Speed: 8.1 mi/hr

Working Time: 11 mins

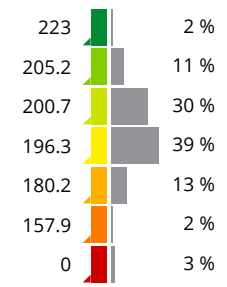
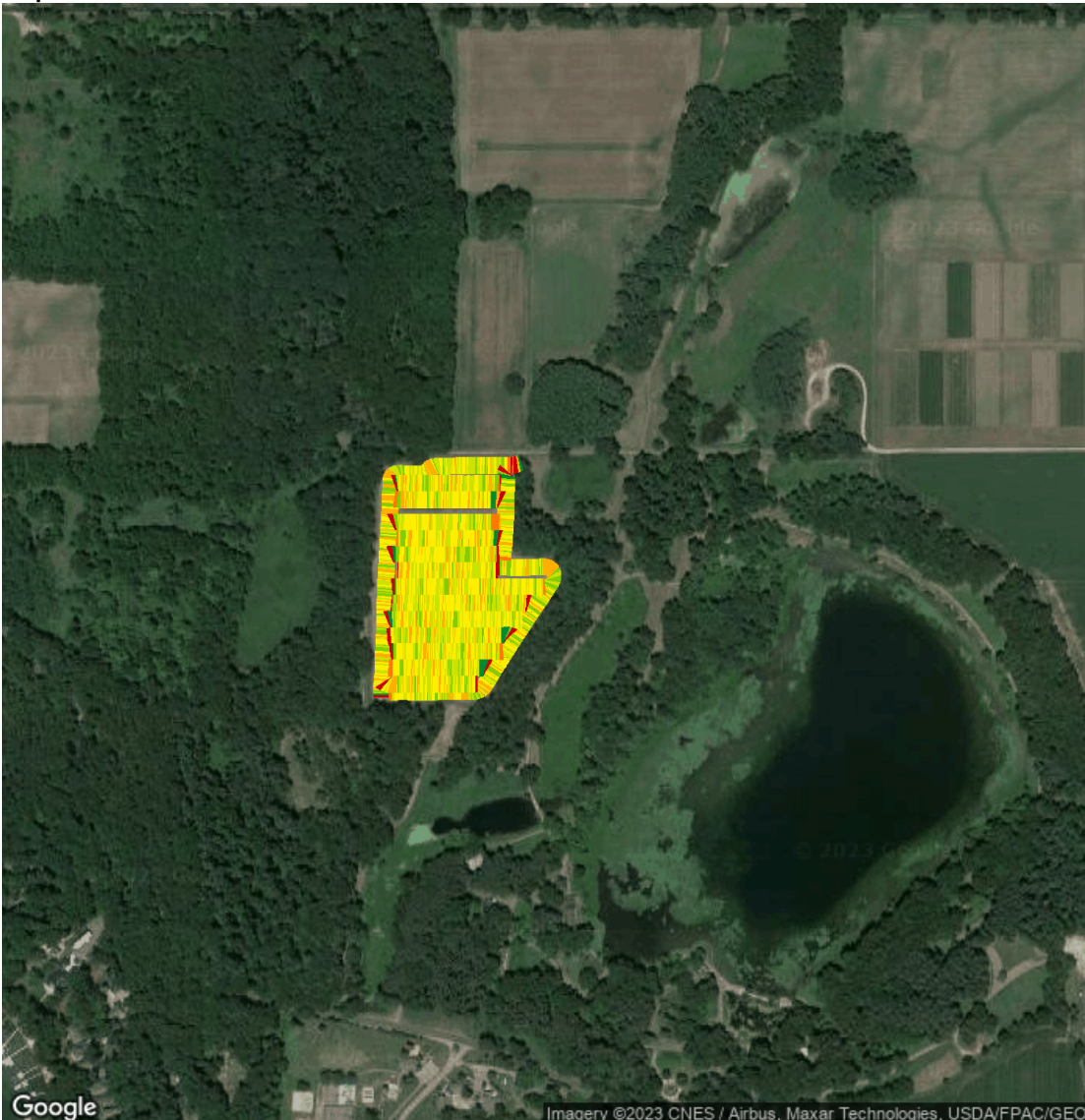
Fuel: 0.1 gal/ac

Productivity: 59.1 ac/hr

Total Fuel: 0.7 gal

Fuel: 3.8 gal/hr

Map: Overview



Equipment

MSUKELLOGDAIRY1L06155MAHG89278 1L06155MAHG892788

Products

10.5-0-30-12s