

Field: 89-1

Client: MSU-Kellogg Farm | Farm: LTAR



2023 20-13.5-10.8-9.1s Application: Applied Rate

Start: Apr 10, 2023 7:18 PM

End: Apr 10, 2023 7:41 PM

Work Totals

Area Applied: 15 ac

Applied Total: 6,193 lb

Target Total: 6,221.7 lb

Applied Rate: 413 lb/ac

Target Rate: 414.9 lb/ac

Performance

Speed: 7.9 mi/hr

Working Time: 18 mins

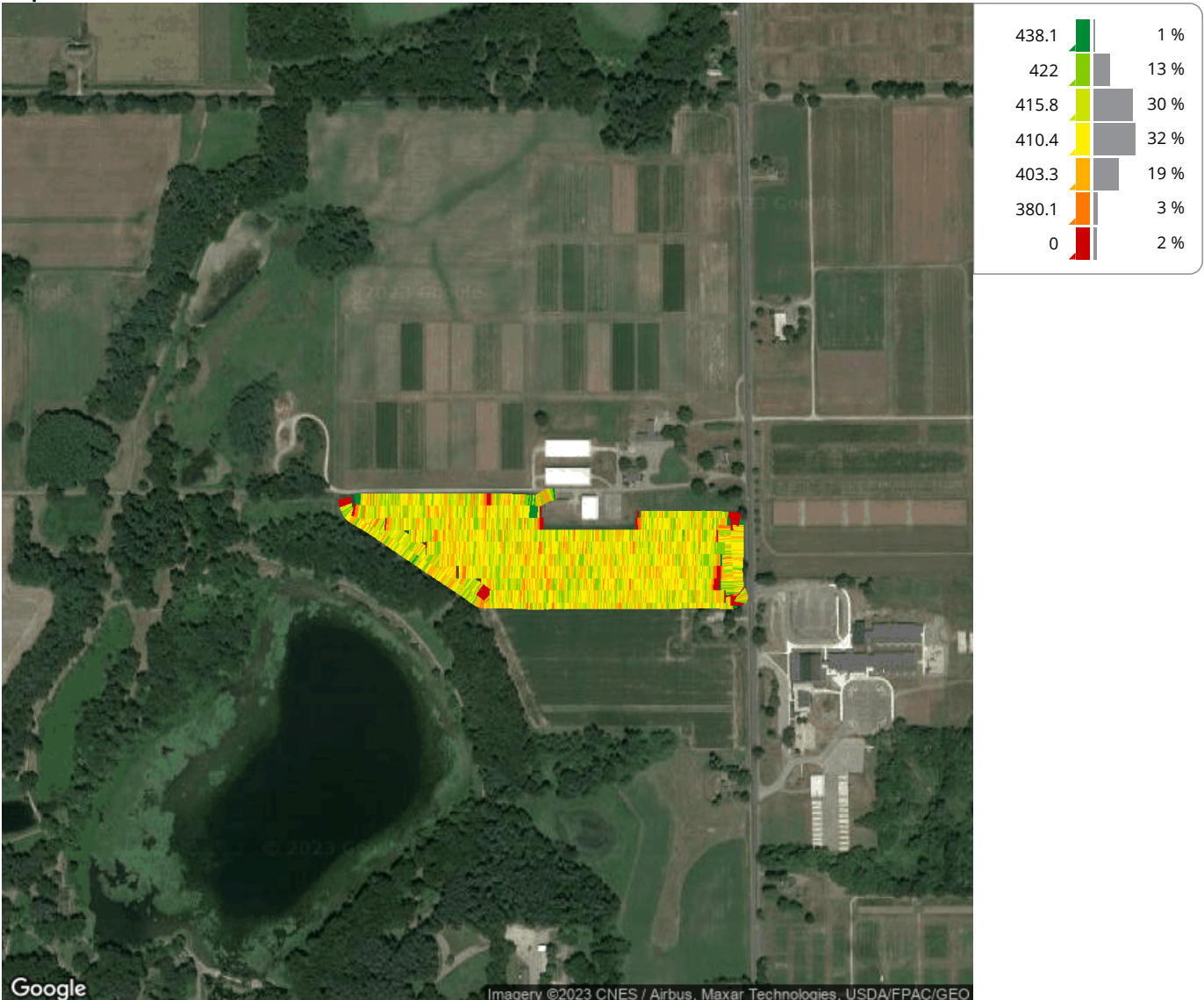
Fuel: 0.1 gal/ac

Productivity: 48.1 ac/hr

Total Fuel: 1.4 gal

Fuel: 4.4 gal/hr

Map: Overview



Equipment

MSUKELLOGDAIRY1L06155MAHG89278 1L06155MAHG892788

Products

20-13.5-10.8-9.1s