

Field: 79-2

Client: MSU-Kellogg Farm | Farm: LTAR



### 2023 20-13.5-10.8-9.1s Application: Applied Rate

Start: Apr 11, 2023 8:44 AM

End: Apr 11, 2023 9:23 AM

#### Work Totals

Area Applied: 27.5 ac

Applied Total: 11,356 lb

Target Total: 11,398.2 lb

Applied Rate: 413.3 lb/ac

Target Rate: 414.9 lb/ac

#### Performance

Speed: 8.3 mi/hr

Working Time: 32 mins

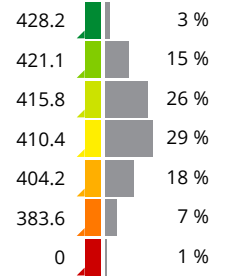
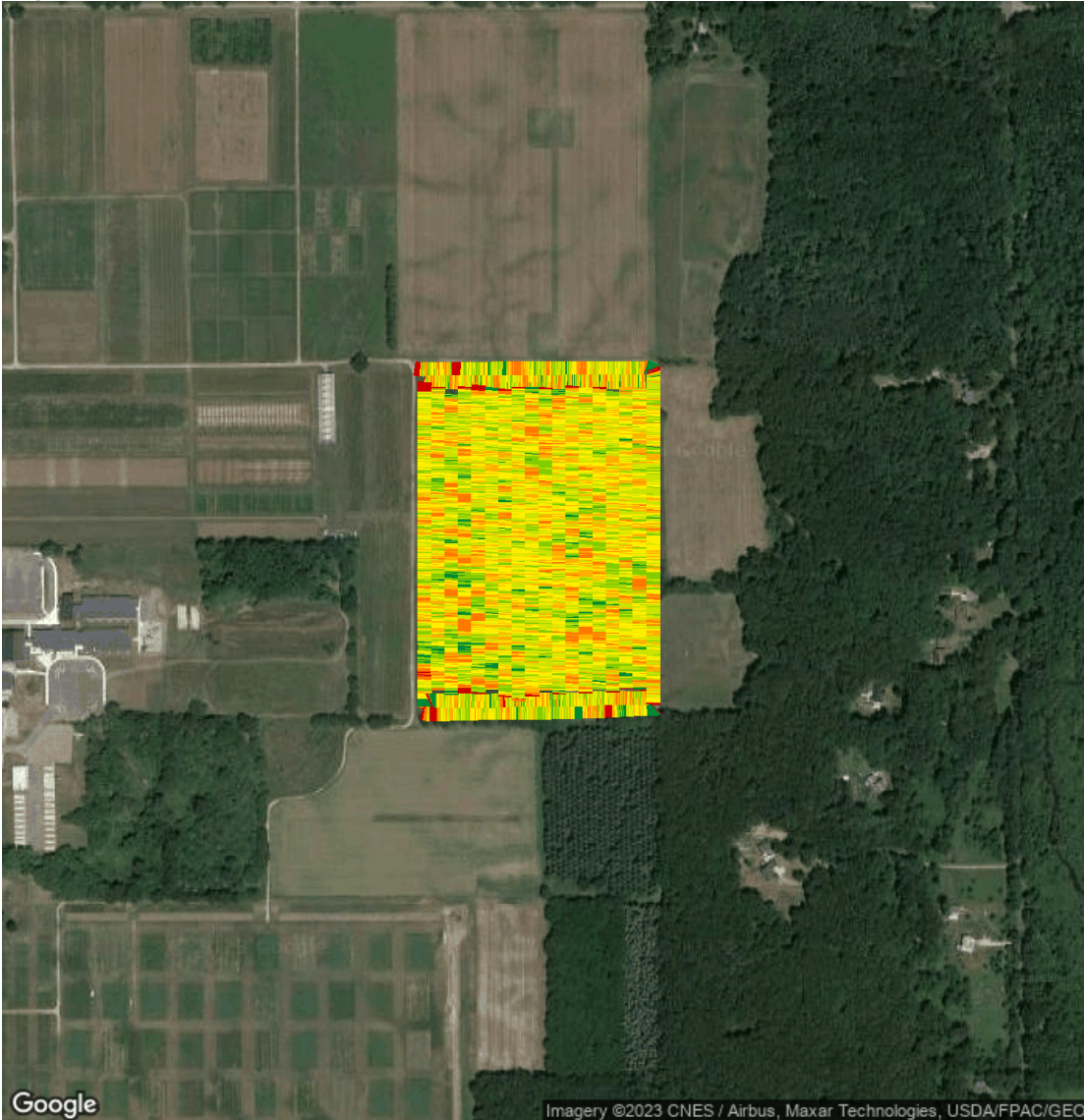
Fuel: 0.1 gal/ac

Productivity: 50.3 ac/hr

Total Fuel: 2.6 gal

Fuel: 4.7 gal/hr

Map: Overview



#### Equipment

MSUKELLOGDAIRY1L06155MAHG89278 1L06155MAHG892788

#### Products

20-13.5-10.8-9.1s