

Field: LA9

Client: MSU-Kellogg Farm | Farm: Lux Arbor



### 2023 Wheat topdress Application: Applied Rate

Start: Apr 15, 2023 12:47 PM

End: Apr 15, 2023 1:05 PM

#### Work Totals

Area Applied: 13.5 ac

Applied Total: 406.1 gal

Target Total: 403 gal

Applied Rate: 30.08 gal/ac

Target Rate: 29.83 gal/ac

#### Performance

Speed: 6.7 mi/hr

Working Time: 12 mins

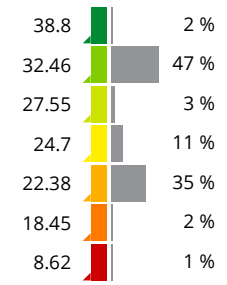
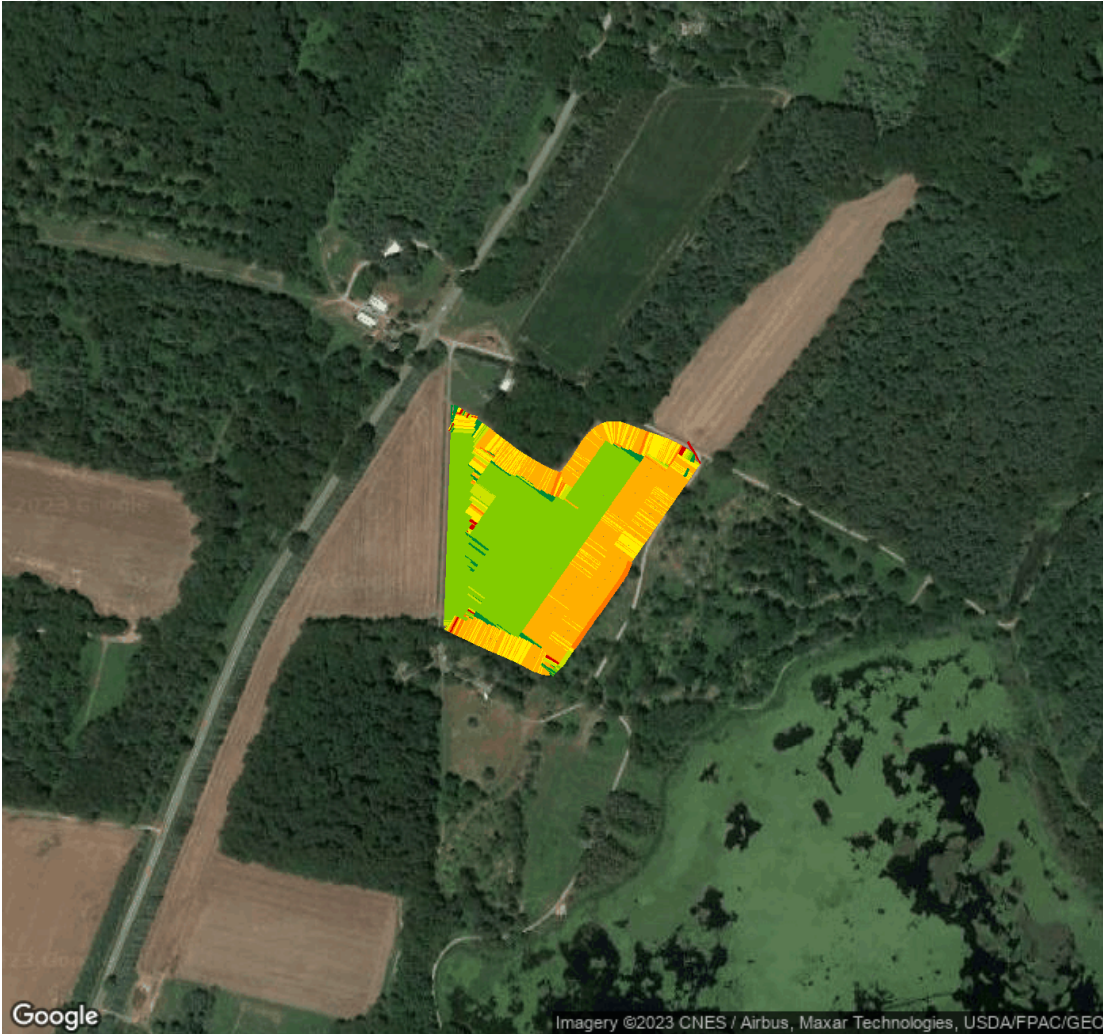
Fuel: 0.1 gal/ac

Productivity: 64.5 ac/hr

Total Fuel: 0.9 gal

Fuel: 4.3 gal/hr

Map: Overview



#### Equipment

MSUKELLOGDAIRY1L06155MAHG89278 1L06155MAHG892788

#### Tank Mix

Product	Applied Rate	Applied Total	Target Rate	Target Total
Water (Carrier)	12.03 gal/ac	162.4 gal	11.93 gal/ac	161 gal
28	18.05 gal/ac	243.7 gal	17.9 gal/ac	242 gal