

Field: 68

Client: MSU-Kellogg Farm | Farm: LTAR



### 2023 23 canola herb Application: Applied Rate

Start: Apr 15, 2023 2:54 PM

End: Apr 15, 2023 3:06 PM

#### Work Totals

Area Applied: 11.9 ac

Applied Total: 195.5 gal

Target Total: 191 gal

Applied Rate: 16.39 gal/ac

Target Rate: 16 gal/ac

#### Performance

Speed: 9.3 mi/hr

Working Time: 8 mins

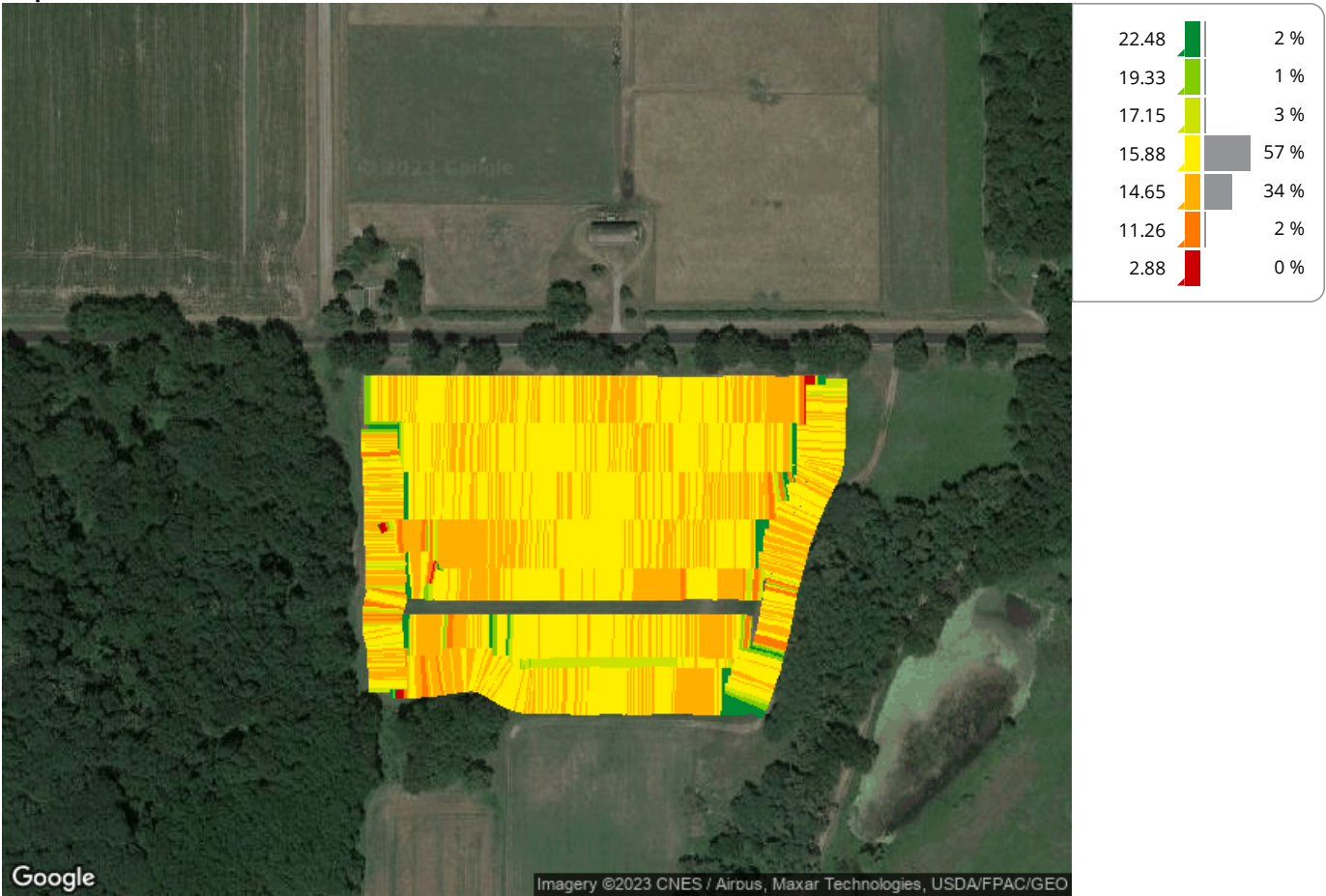
Fuel: 0.1 gal/ac

Productivity: 87.3 ac/hr

Total Fuel: 0.8 gal

Fuel: 5.6 gal/hr

Map: Overview



#### Equipment

MSUKELLOGDAIRY1L06155MAHG89278 1L06155MAHG892788

#### Tank Mix

Product	Applied Rate	Applied Total	Target Rate	Target Total
Water (Carrier)	16.3 gal/ac	194.5 gal	15.92 gal/ac	190 gal
AMS	2.19 lb/ac	26.1 lb	2.13 lb/ac	25 lb
Beyond	4.37 floz/ac	52.1 floz	4.27 floz/ac	51 floz
LI700	6.56 floz/ac	78.2 floz	6.4 floz/ac	76 floz