

Field: LA3

Client: MSU-Kellogg Farm | Farm: Lux Arbor



2023 10.2-0-19.8-17s Application: Applied Rate

Start: Mar 30, 2023 9:02 AM

End: Mar 30, 2023 9:12 AM

Work Totals

Area Applied: 7 ac

Applied Total: 2,004 lb

Target Total: 2,017.1 lb

Applied Rate: 288.1 lb/ac

Target Rate: 290 lb/ac

Performance

Speed: 10.1 mi/hr

Working Time: 7 mins

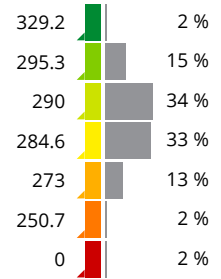
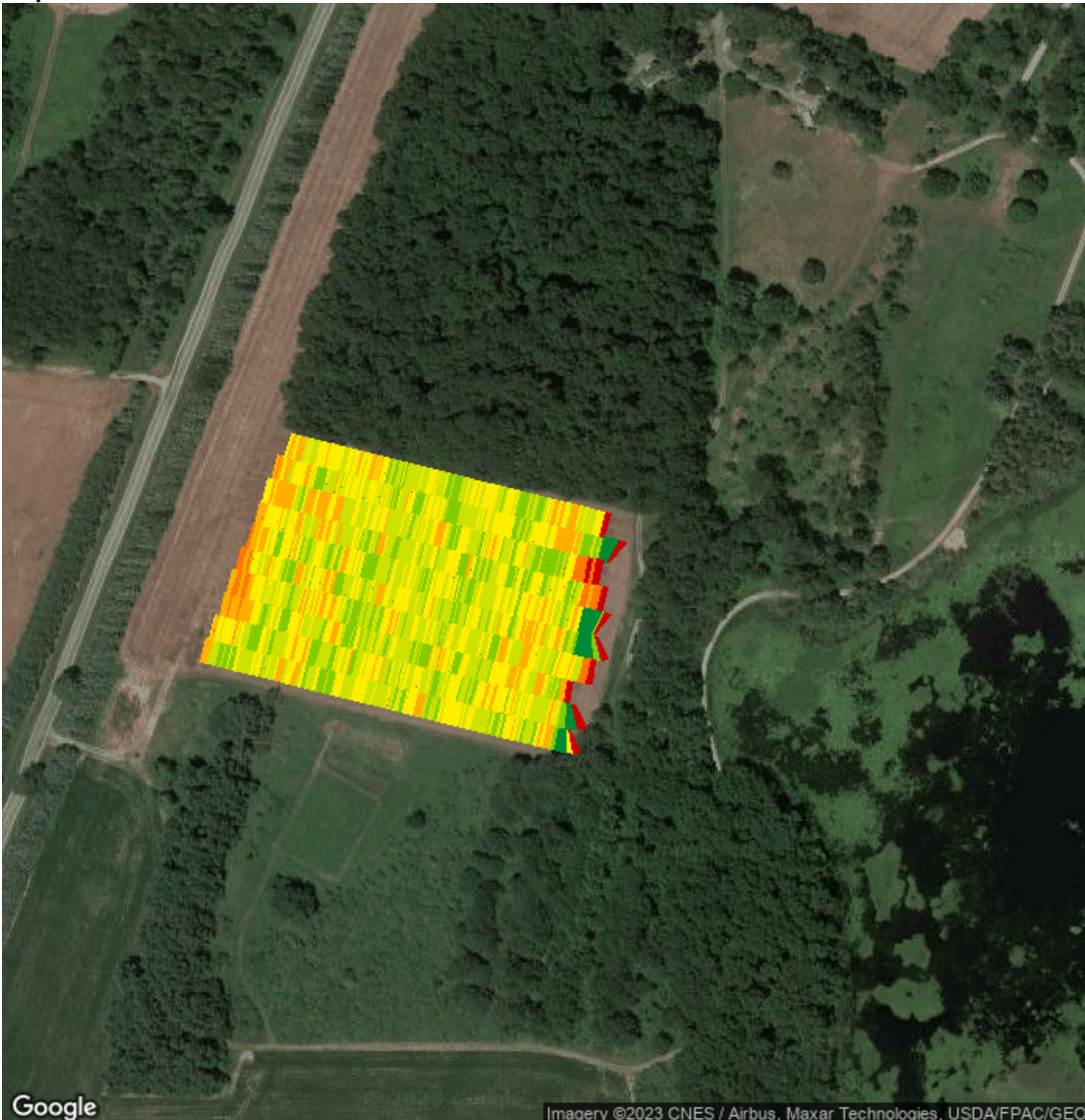
Fuel: 0.1 gal/ac

Productivity: 54.9 ac/hr

Total Fuel: 0.7 gal

Fuel: 5.3 gal/hr

Map: Overview



Equipment

MSUKELLOGDAIRY1L06155MAHG89278 1L06155MAHG892788

Products

10.2-0-19.8-17s