

Field: LA2

Client: MSU-Kellogg Farm | Farm: Lux Arbor



2023 10.2-0-19.8-17s Application: Applied Rate

Start: Mar 30, 2023 8:56 AM

End: Mar 30, 2023 9:17 AM

Work Totals

Area Applied: 8.2 ac
Applied Total: 2,340 lb
Target Total: 2,379.3 lb

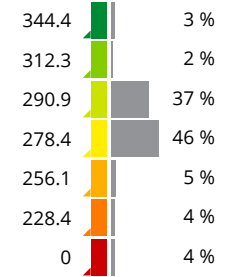
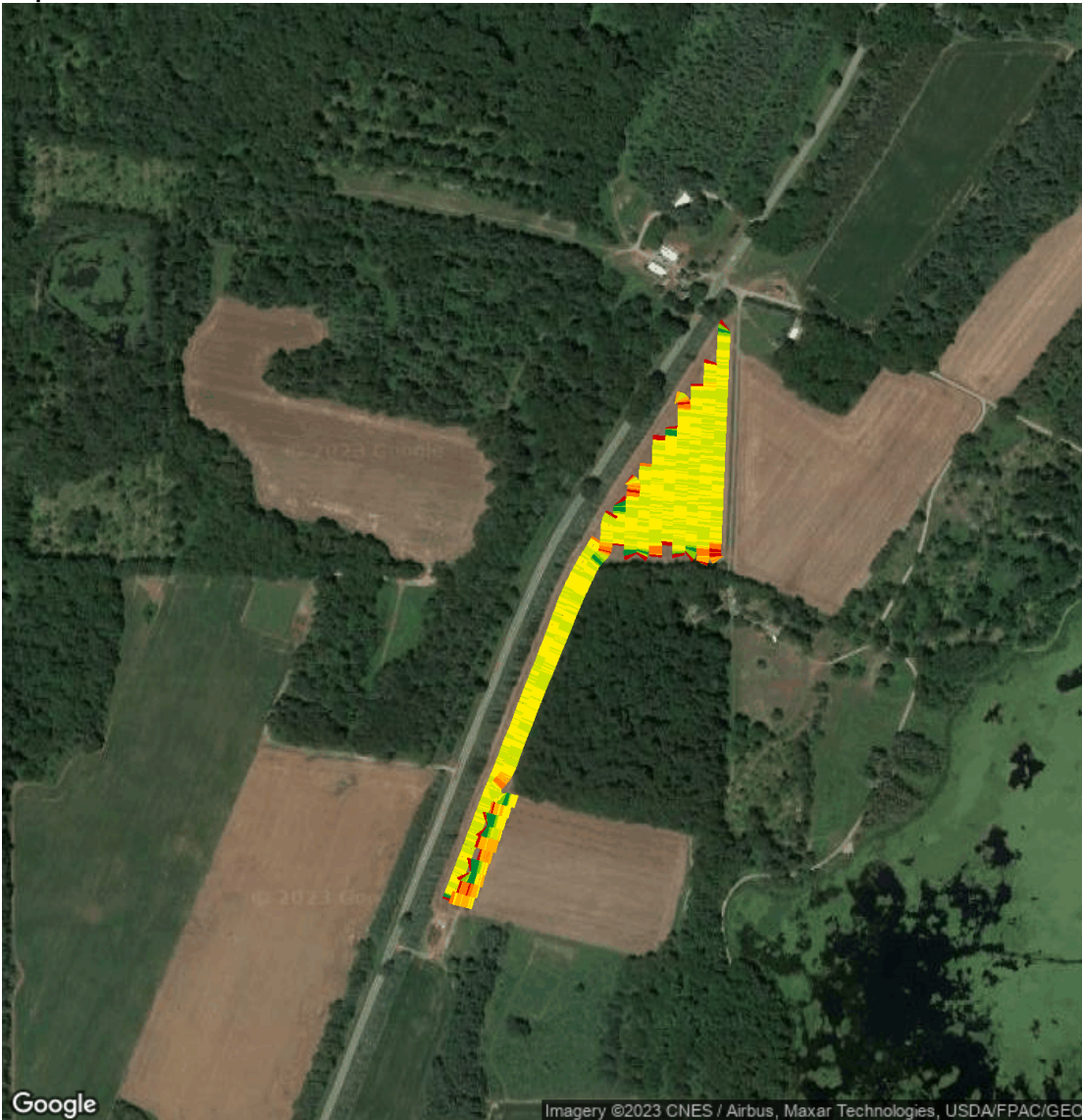
Applied Rate: 285.2 lb/ac
Target Rate: 290 lb/ac

Performance

Speed: 9.8 mi/hr
Working Time: 9 mins
Fuel: 0.1 gal/ac

Productivity: 53.5 ac/hr
Total Fuel: 0.8 gal
Fuel: 5.3 gal/hr

Map: Overview



Equipment

MSUKELLOGDAIRY1L06155MAHG89278 1L06155MAHG892788

Products

10.2-0-19.8-17s