

Field: 47-6

Client: MSU-Kellogg Farm | Farm: Ford



### 2023 10.2-0-19.8-17s Application: Applied Rate

Start: Mar 30, 2023 7:24 AM

End: Mar 30, 2023 10:54 AM

#### Work Totals

Area Applied: 29.6 ac

Applied Total: 8,505 lb

Target Total: 8,568.9 lb

Applied Rate: 287.8 lb/ac

Target Rate: 290 lb/ac

#### Performance

Speed: 9 mi/hr

Working Time: 36 mins

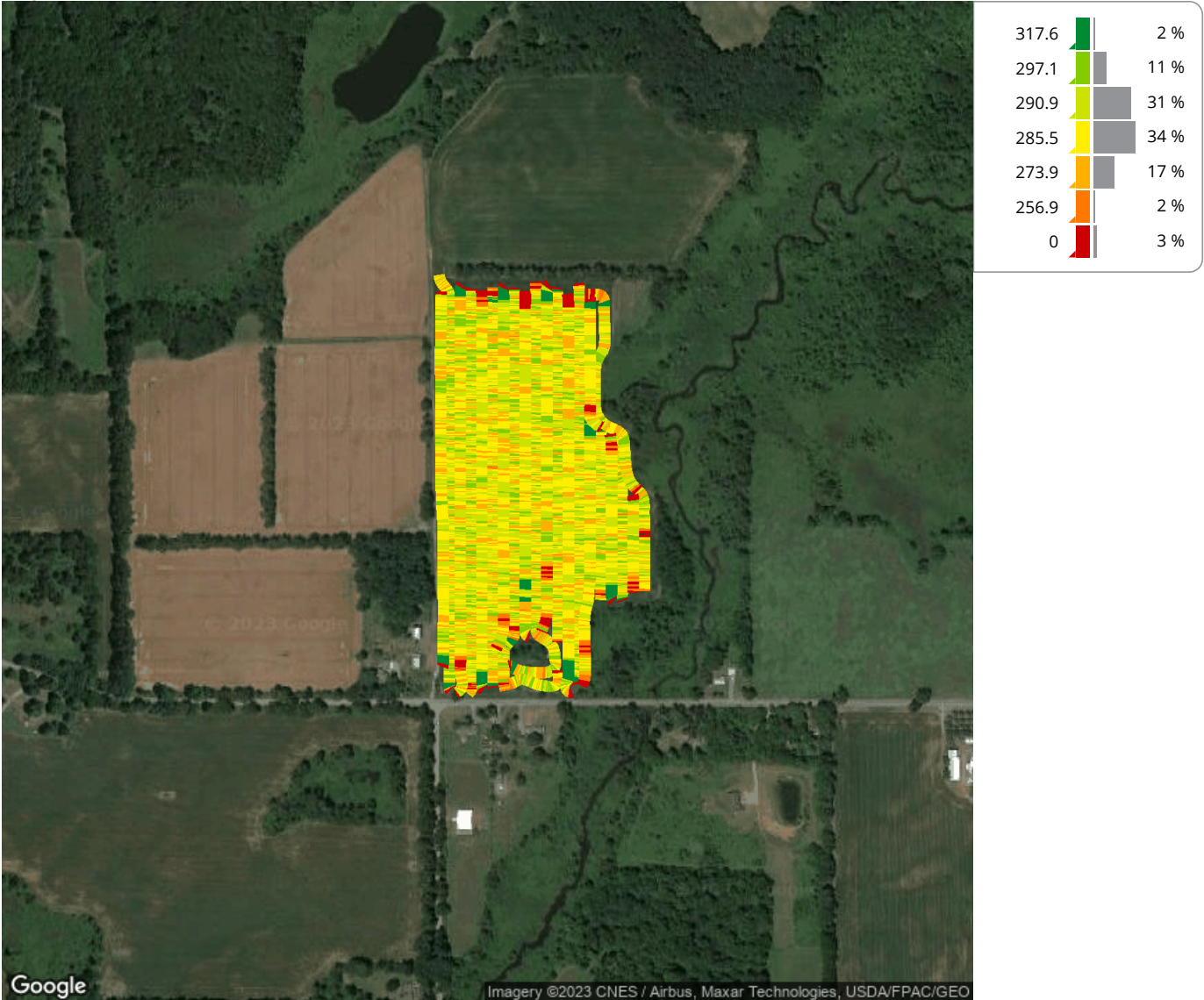
Fuel: 0.1 gal/ac

Productivity: 48.9 ac/hr

Total Fuel: 2.4 gal

Fuel: 4 gal/hr

Map: Overview



#### Equipment

MSUKELLOGDAIRY1L06155MAHG89278 1L06155MAHG892788

#### Products

10.2-0-19.8-17s