

Field: 47-5

Client: MSU-Kellogg Farm | Farm: Ford



2023 10.2-0-19.8-17s Application: Applied Rate

Start: Mar 30, 2023 7:05 AM

End: Mar 30, 2023 10:52 AM

Work Totals

Area Applied: 16.9 ac

Applied Total: 4,844 lb

Target Total: 4,885.1 lb

Applied Rate: 287.5 lb/ac

Target Rate: 290 lb/ac

Performance

Speed: 8.5 mi/hr

Working Time: 21 mins

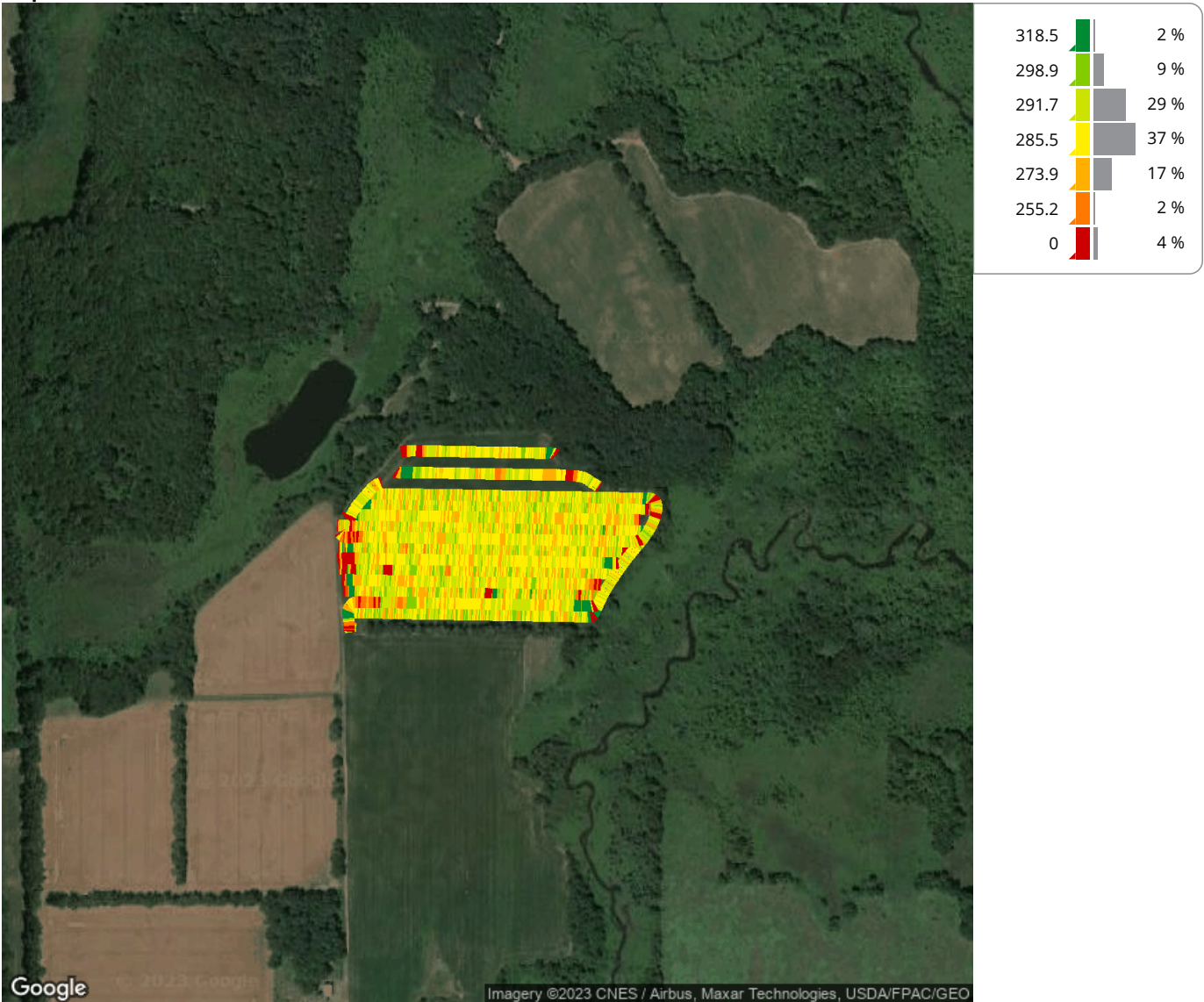
Fuel: 0.1 gal/ac

Productivity: 46.4 ac/hr

Total Fuel: 1.4 gal

Fuel: 4 gal/hr

Map: Overview



Equipment

MSUKELLOGDAIRY1L06155MAHG89278 1L06155MAHG892788

Products

10.2-0-19.8-17s