

Field: 94

Client: MSU-Kellogg Farm | Farm: LTAR



### 2023 28-0-0 UAN Application: Applied Rate

Start: Mar 28, 2023 6:55 AM

End: Mar 28, 2023 7:22 AM

#### Work Totals

Area Applied: 20.3 ac

Applied Total: 311 gal

Target Total: 307 gal

Applied Rate: 15.32 gal/ac

Target Rate: 15.1 gal/ac

#### Performance

Speed: 6.2 mi/hr

Working Time: 20 mins

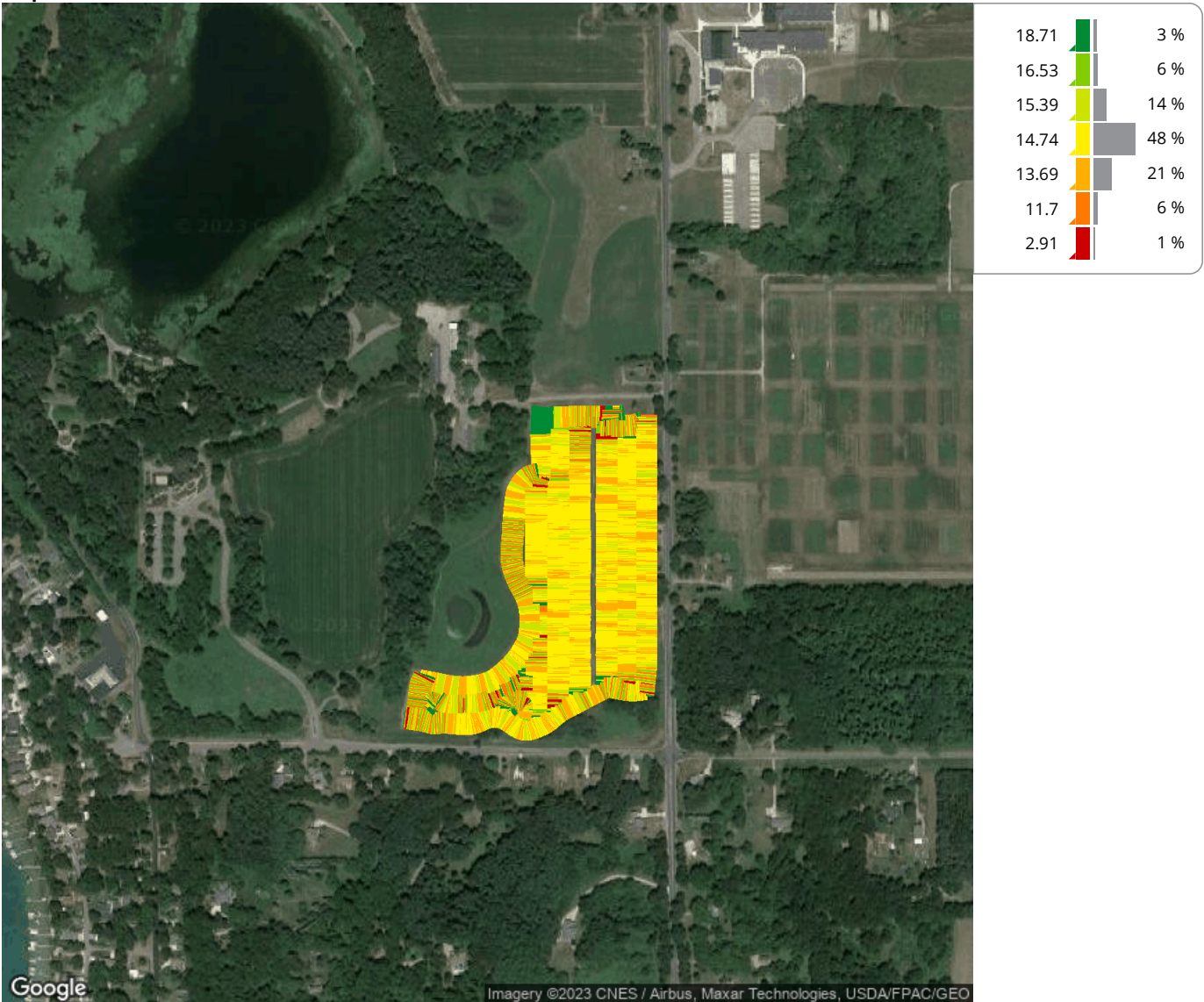
Fuel: 0.1 gal/ac

Productivity: 60.8 ac/hr

Total Fuel: 1.5 gal

Fuel: 4.5 gal/hr

Map: Overview



#### Equipment

MSUKELLOGDAIRY1L06155MAHG89278 1L06155MAHG892788

#### Products

28-0-0 UAN