

Field: 87

Client: MSU-Kellogg Farm | Farm: LTAR



2023 28-0-0 UAN Application: Applied Rate

Start: Mar 28, 2023 7:35 AM

End: Mar 28, 2023 7:55 AM

Work Totals

Area Applied: 11.3 ac

Applied Total: 172.9 gal

Target Total: 170 gal

Applied Rate: 15.28 gal/ac

Target Rate: 15 gal/ac

Performance

Speed: 6.2 mi/hr

Working Time: 11 mins

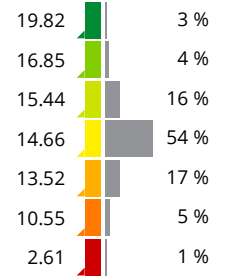
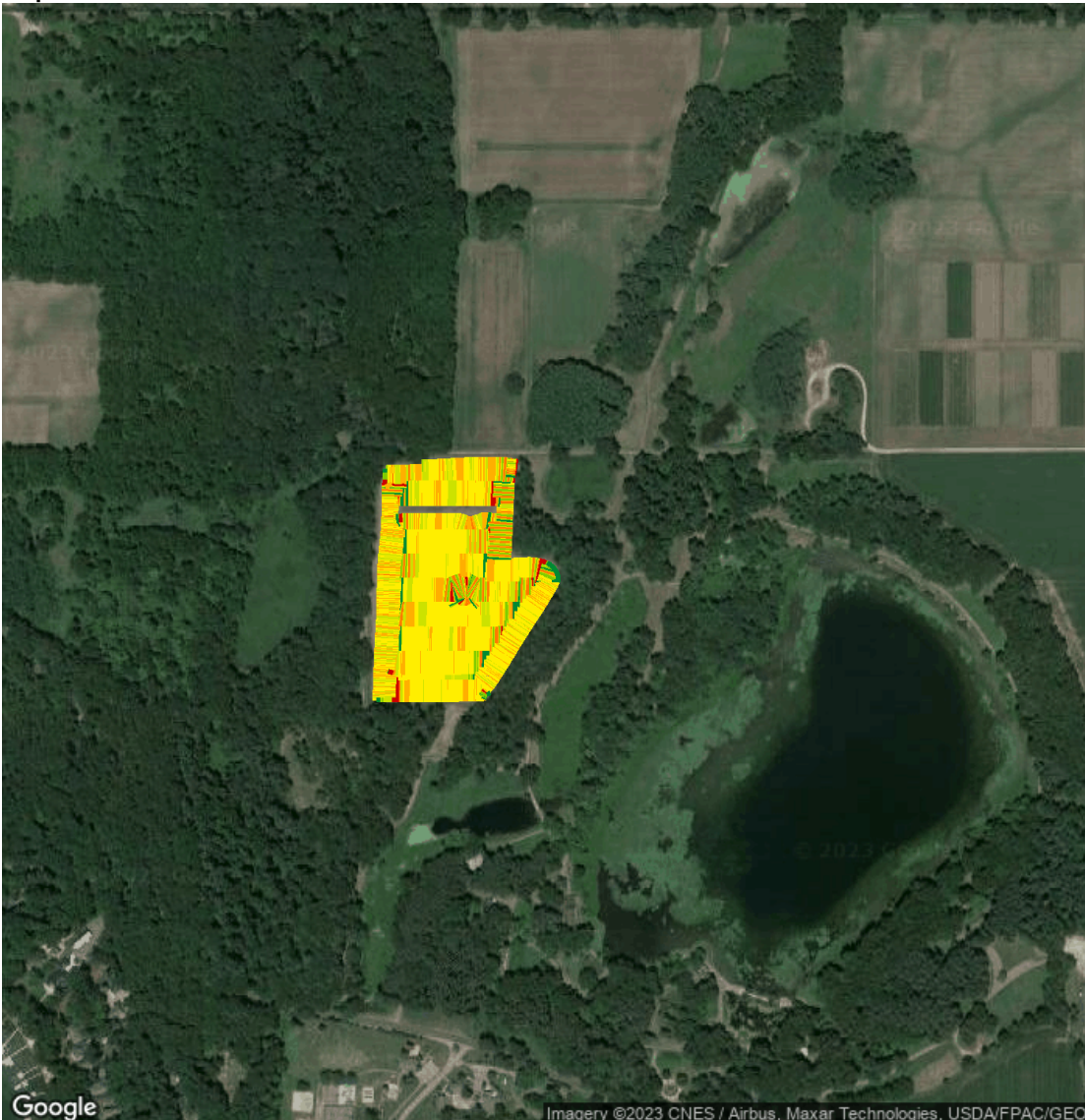
Fuel: 0.1 gal/ac

Productivity: 56.9 ac/hr

Total Fuel: 0.8 gal

Fuel: 4.2 gal/hr

Map: Overview



Equipment

MSUKELLOGDAIRY1L06155MAHG89278 1L06155MAHG892788

Products

28-0-0 UAN