

Field: 79-1

Client: MSU-Kellogg Farm | Farm: LTAR



### 2023 28-0-0 UAN Application: Applied Rate

Start: Mar 28, 2023 8:33 AM

End: Mar 28, 2023 8:54 AM

#### Work Totals

Area Applied: 26.2 ac

Applied Total: 395.4 gal

Target Total: 392 gal

Applied Rate: 15.11 gal/ac

Target Rate: 15 gal/ac

#### Performance

Speed: 9.7 mi/hr

Working Time: 16 mins

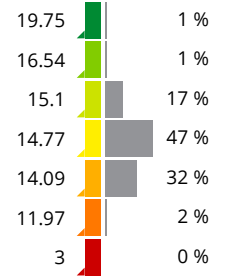
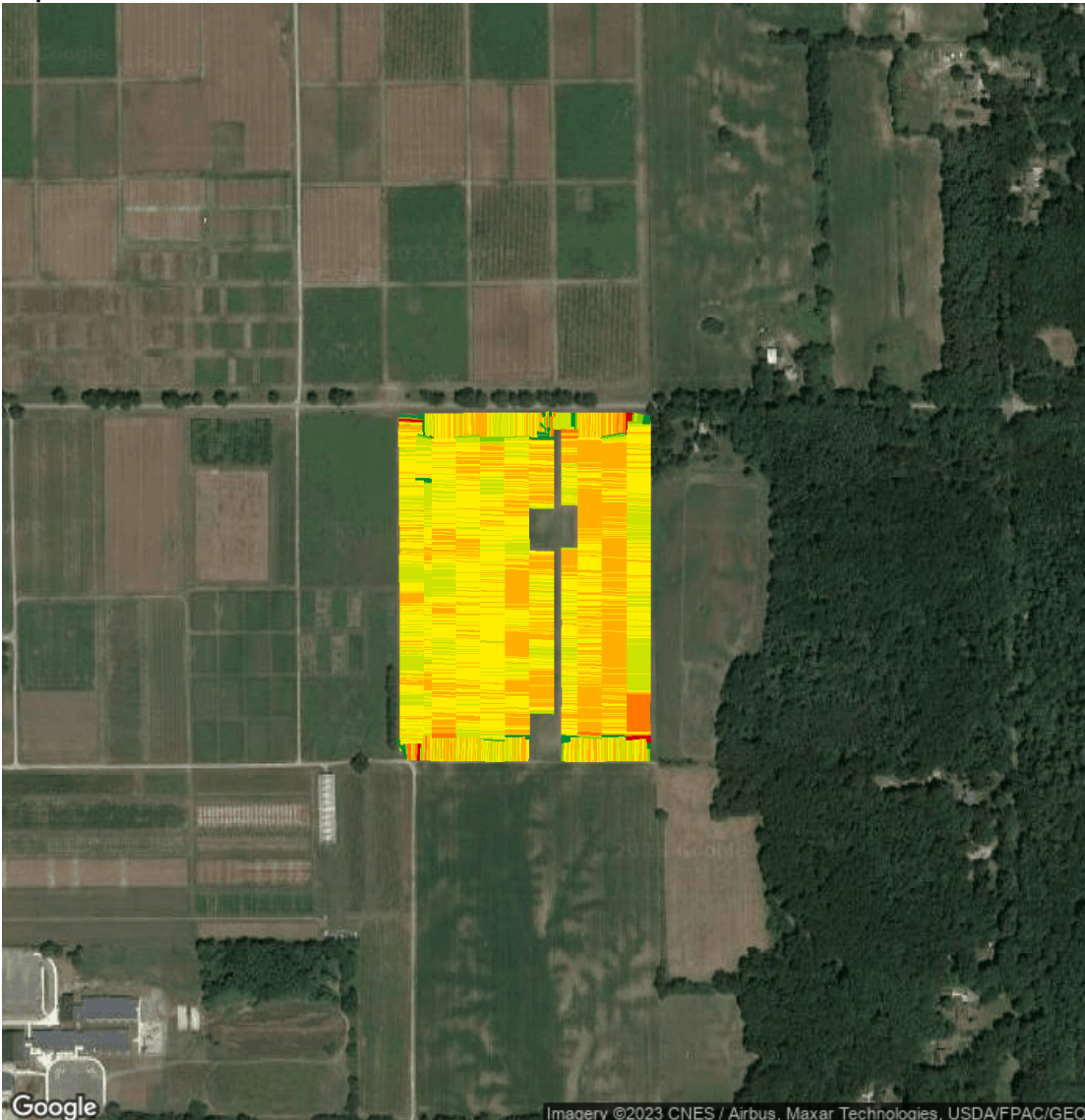
Fuel: 0.1 gal/ac

Productivity: 95.6 ac/hr

Total Fuel: 1.5 gal

Fuel: 5.6 gal/hr

Map: Overview



#### Equipment

MSUKELLOGDAIRY1L06155MAHG89278 1L06155MAHG892788

#### Products

28-0-0 UAN