

Field: 68

Client: MSU-Kellogg Farm | Farm: LTAR



### 2023 28-0-0 UAN Application: Applied Rate

Start: Mar 28, 2023 8:01 AM

End: Mar 28, 2023 8:16 AM

#### Work Totals

Area Applied: 12 ac

Applied Total: 182.3 gal

Target Total: 180 gal

Applied Rate: 15.16 gal/ac

Target Rate: 15 gal/ac

#### Performance

Speed: 7.8 mi/hr

Working Time: 9 mins

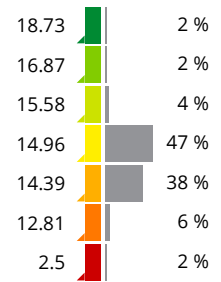
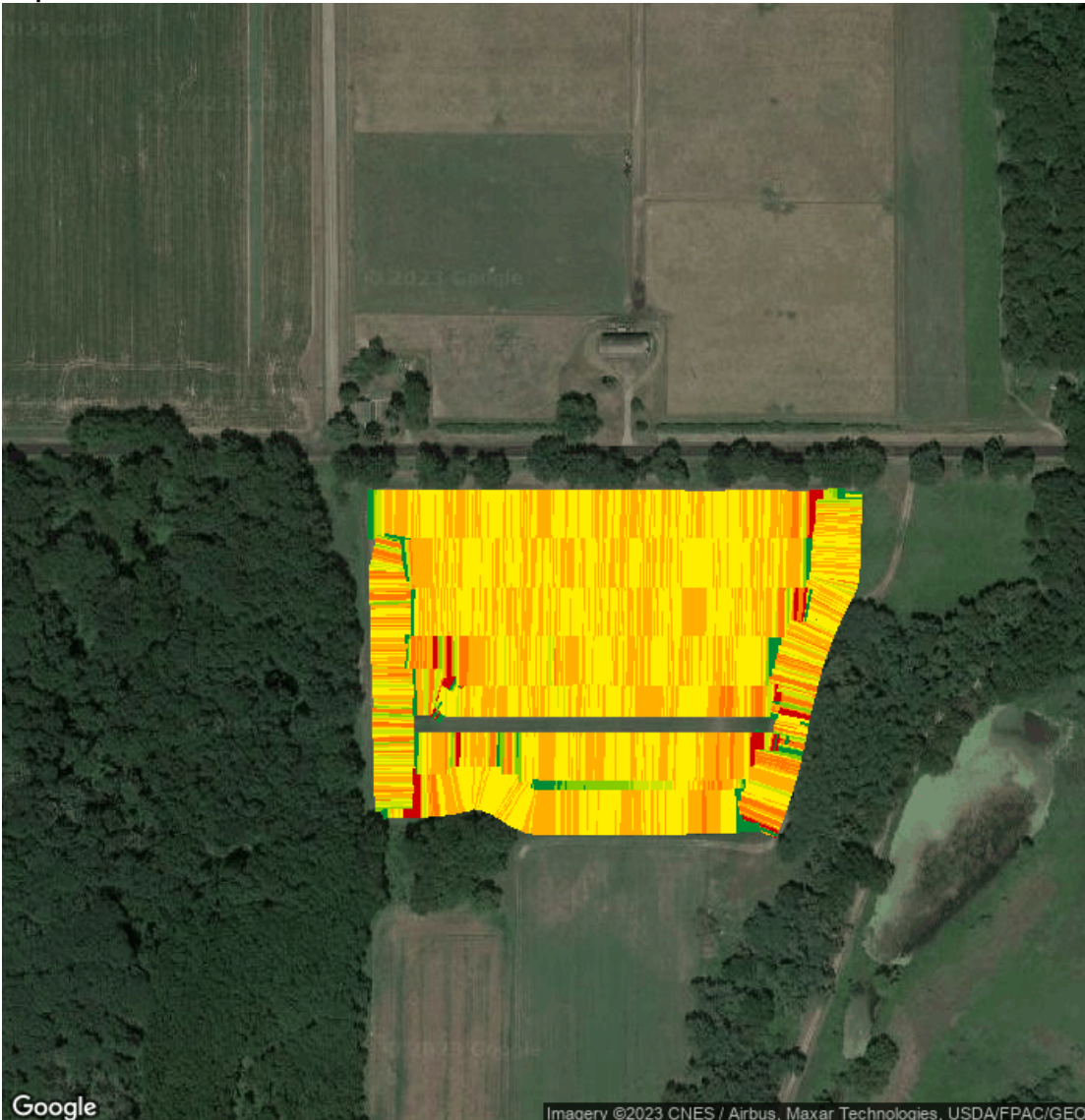
Fuel: 0.1 gal/ac

Productivity: 72.5 ac/hr

Total Fuel: 0.8 gal

Fuel: 4.6 gal/hr

Map: Overview



#### Equipment

MSUKELLOGDAIRY1L06155MAHG89278 1L06155MAHG892788

#### Products

28-0-0 UAN