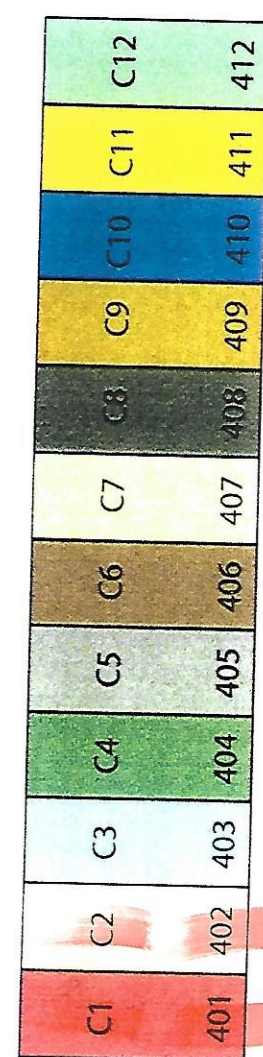
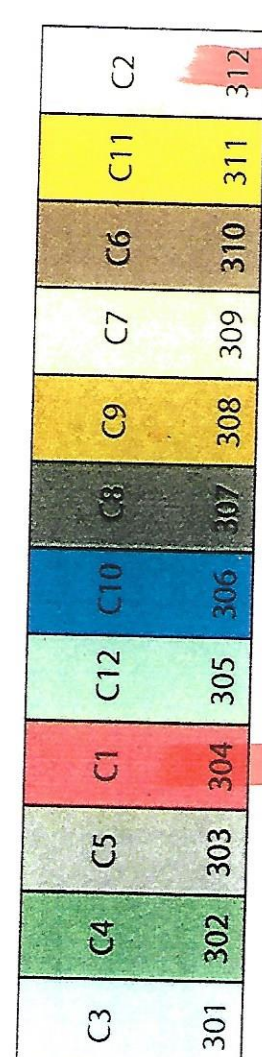


2012 Fall LTER CE Corn Harvest trts CE1 + CE2
 November 8, 2012

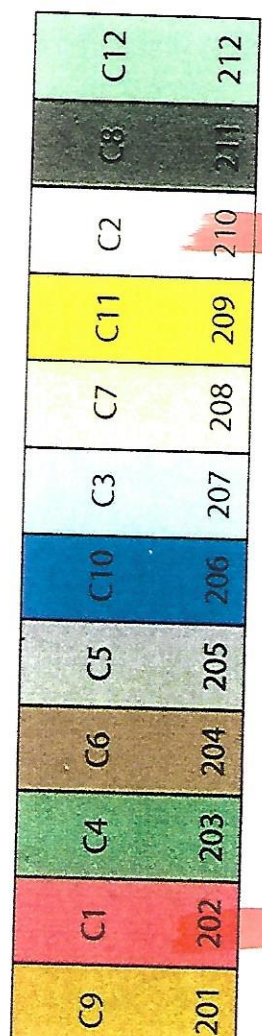
KBS LTER Cellulosic Biofuels Experiment



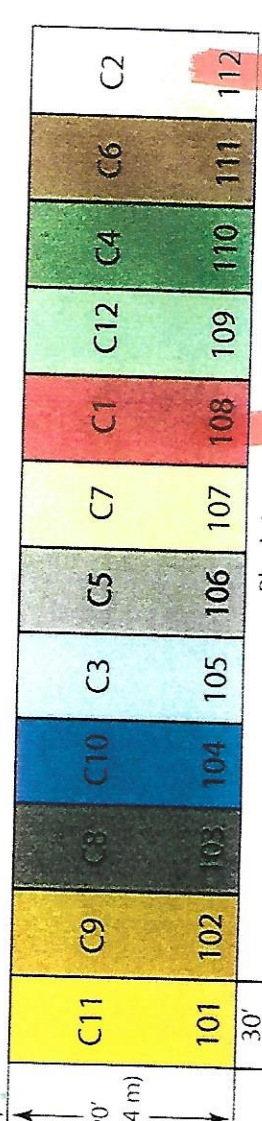
Block 4



Block 3



Block 2



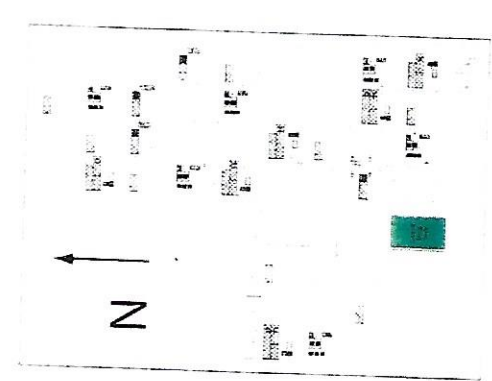
Block 1

Treatment	Description
C1	Continuous C
C2	Corn-soybean
C3	Soybean-corn
C4	Switchgrass
C5	Switchgrass
C6	Switchgrass
C7	Switchgrass
C8	C3 - C4 - legu
C9	MI native pra
C10	MI native pra
C11	MI native pra
C12	MI native pra

All treatments established.
 Each plot is 30' x 90' (9.1 m)

Plot #	Harvest
1	10/8
2	11/2
3	20/2
4	21/0
5	30/4
6	31/2
7	40/1
8	40/2

Location within main LTER site



2012 Fall LTER CE Corn Harvest
 11/8/12
 Time: 4:00:20 PM
 Pages: Row