

Rep 1

# Micro Plots



50'

Seven Rows  
Cut

5 Rows  
Cut

40'

Total Area Cut  
= .9857 A

345

225

$$225 \times 56 = 12,600 \text{ sq ft} \\ = .289 A$$

~~40 x 225 = 9000~~  
~~78200~~  
~~11882 A~~

$$40 \times 155 = 6200 \text{ sq ft} \\ = .1423 A$$

5 Rows

80' ← →  
60' ↓  
 $60 \times 80 = 4800 \text{ sq ft}$   
= .116 A

2 Rows

96' ← →  
30' ↓  
 $30 \times 96 = 2880 \text{ sq ft}$   
= .066 A

8 Rows

$$50 \times 285 = 14,250 \text{ sq ft} \\ = .327 A$$

56' ← →

9 Rows

112' ← →  
20' ↑  
 $112 \times 20 = 2240 \text{ sq ft}$   
= .0514 A

155'

285

Rep 1

50'

Micro Plots



Seven Rows  
Cut

5 Rows  
Cut

9 Rows

20'

8 Rows

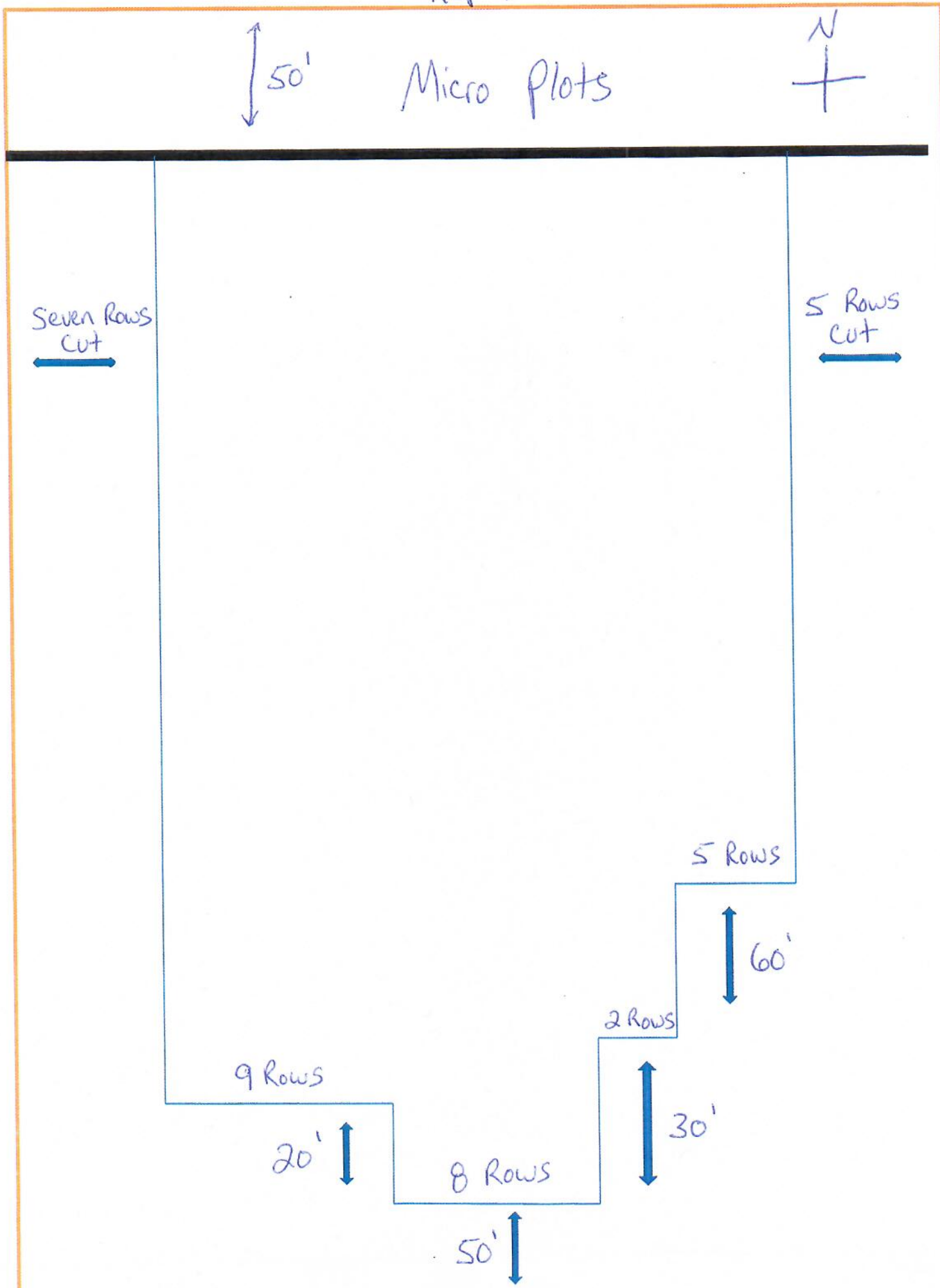
50'

2 Rows

30'

5 Rows

60'



50'

Micro Plots



5 Rows cut

5 Rows cut

Total Area cut = .82765 A

345

260

205

40x260

= 10,400 sqft

= .23875 A

40x205

= 8200 sqft

= .1882 A

12 Rows

40'

40'

14 Rows

55'

55x136

= 7480 sqft

= .171717 A

136'

35'

35x285

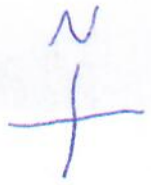
= 9975 sqft

= .22899 A

Rep 2

50'

Micro Plots



5 Rows  
cut

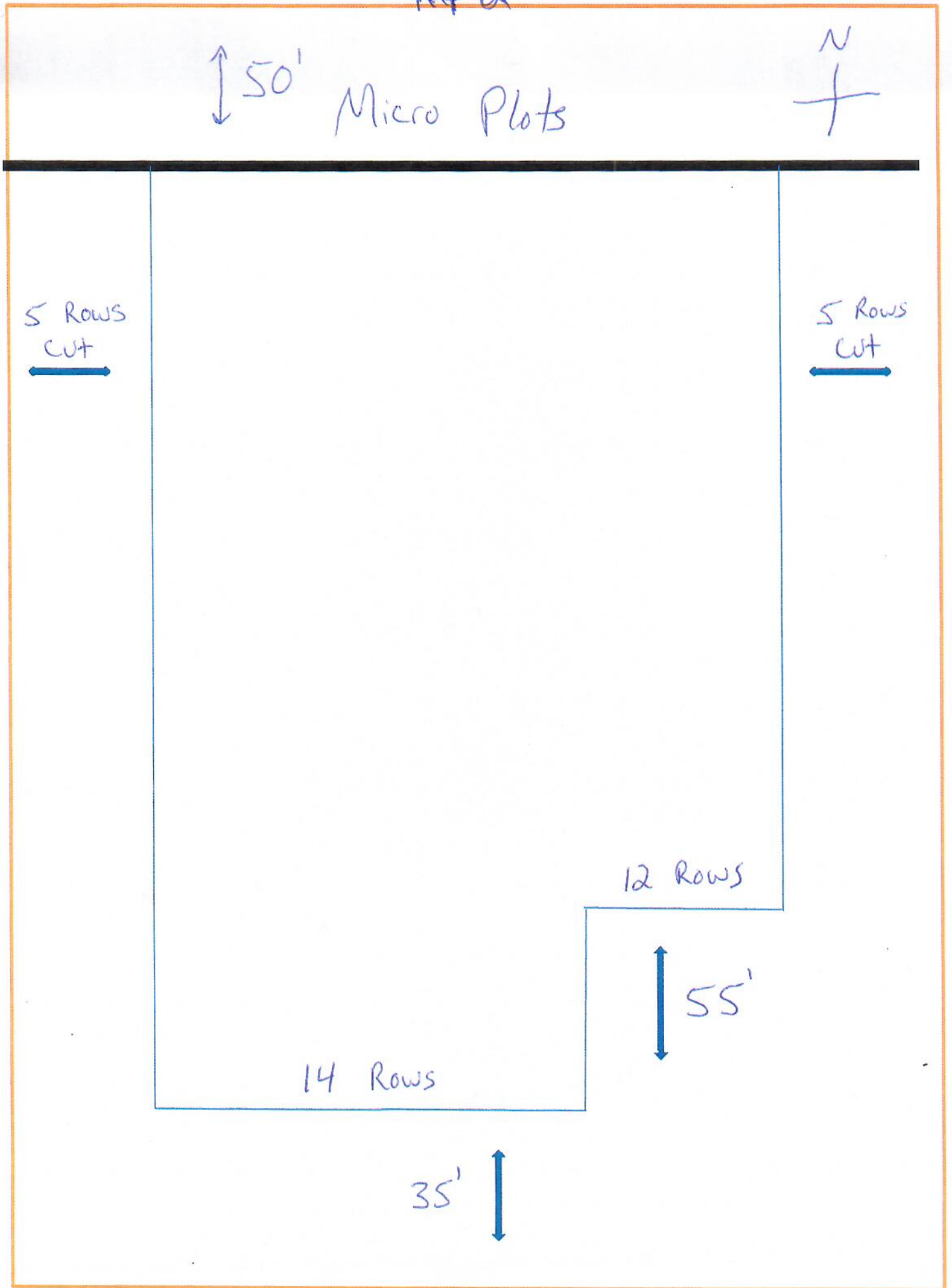
5 Rows  
cut

12 Rows

55'

14 Rows

35'





Rep 5

50'

Micro Plots



5 Rows  
Cut

5 Rows  
Cut

Total Area Cut

= .7333 A

345'

242'

242 x 40

= 9680 sqft

= .2222 A

179'

40 x 179

= 7160 sqft

= .1643 A

40'

40'

53'

53 x 285

= 15105 sqft

= .34676 A

285'

Rep S

50'

Micro Plots

N  
+

5 Rows  
cut

5 Rows  
cut

179'

53'

