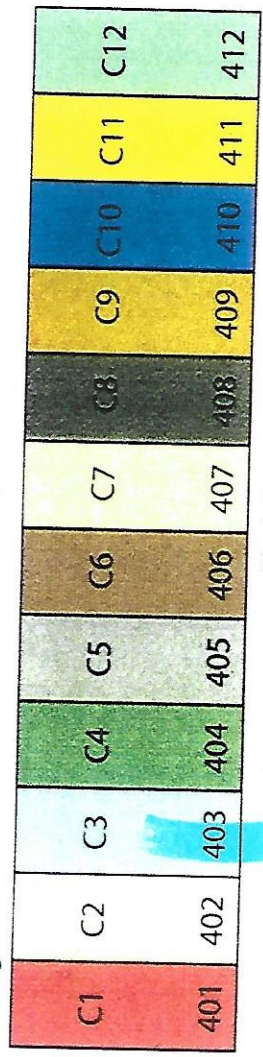


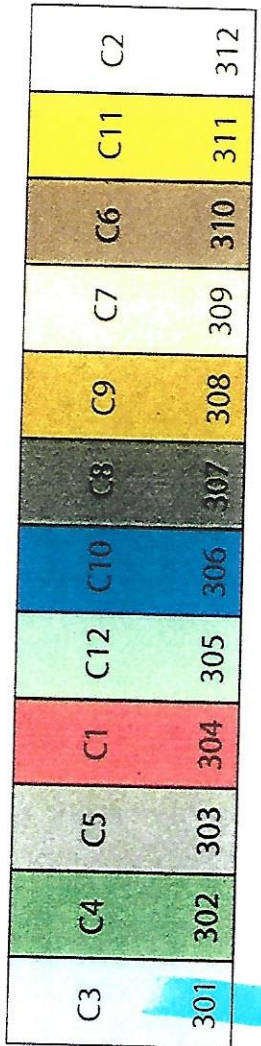
Old LTER Soybean Harvest
October 28, 2012

KBS LTER Cellulosic Biofuels Experiment

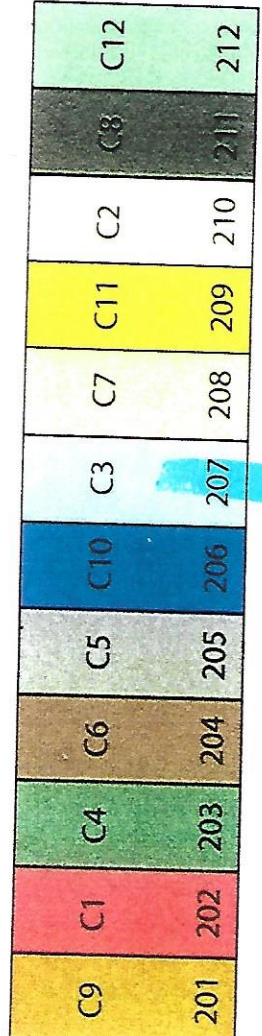
4 - 15 inch row spacing rows were harvested
90ft plot length.



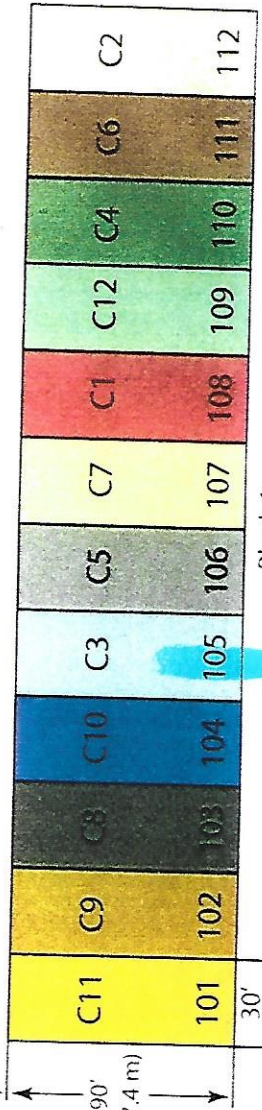
Block 4



Block 3



Block 2



Block 1

Treatment	Description
C1	Continuous corn
C2	Corn-soybean
C3	Soybean-corn
C4	Switchgrass (C)
C5	Switchgrass (C)
C6	Switchgrass (S)
C7	Switchgrass (S)
C8	C3 - C4 - legum
C9	MI native prairie
C10	MI native prairie
C11	MI native prairie
C12	MI native prairie

All treatments established June 2012
Each plot is 30' x 90' (9.1 m x 27.4 m)

90ft plots 4 - 15 inch rows harvested
Soybean 2012

2012 DE Soybeans
Date: 10/28/12
Time: 4:05:17 PM

Range Row

Plot #	Row	Harvested
1	1	105
5.23	12.70	61.45
2	1	207
2.18	17.49	60.36
3	1	301
5.55	12.30	61.97
4	1	403
4.99	12.22	61.95

Location within m...

