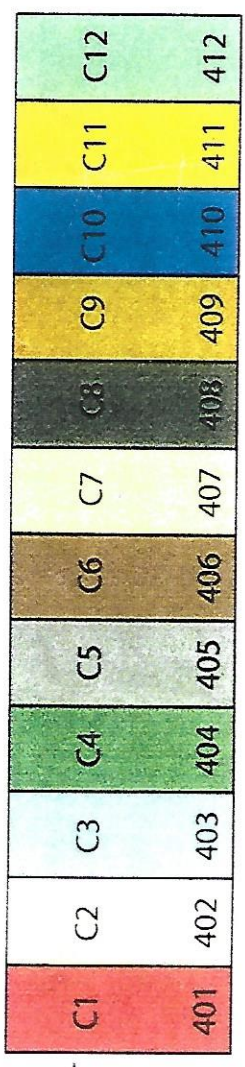


plot length / by rep for 2012 CE4 - CE12 Harvest

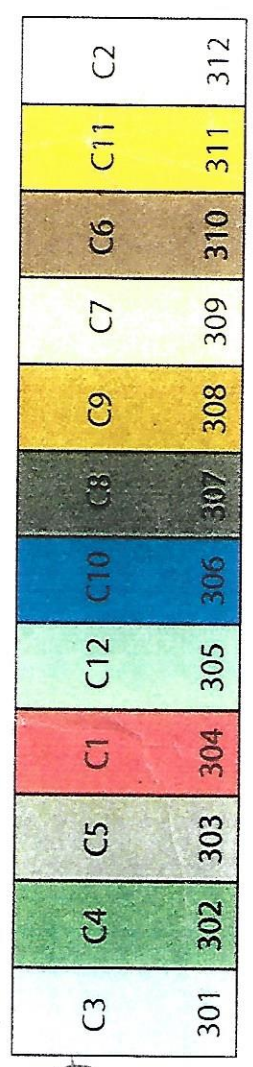
### KBS LTER Cellulosic Biofuels Experiment

Treatment	Description
C1	Continuous corn
C2	Corn-soybean
C3	Soybean-corn
C4	Switchgrass (Cave-in-rock) + N
C5	Switchgrass (Cave-in-rock) no N
C6	Switchgrass (Southlow) + N
C7	Switchgrass (Southlow) no N
C8	C3 - C4 - legume mix
C9	MI native prairie grasses (6 spp.)
C10	MI native prairie grasses (10 spp.)
C11	MI native prairie grasses (18 spp.)
C12	MI native prairie grasses (30 spp.)

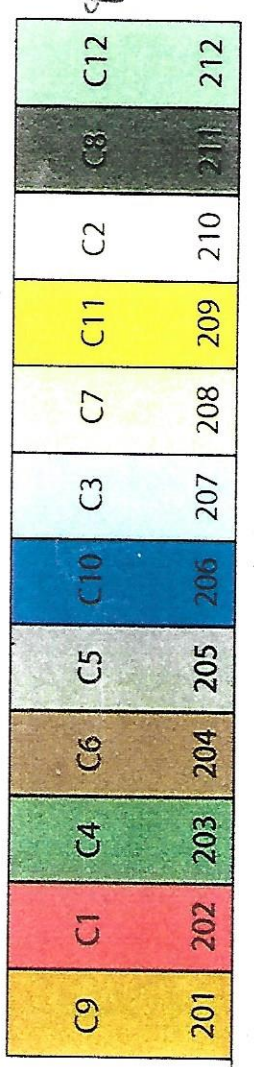
All treatments established June 2008  
Each plot is 30' x 90' (9.1 m x 27.4 m)



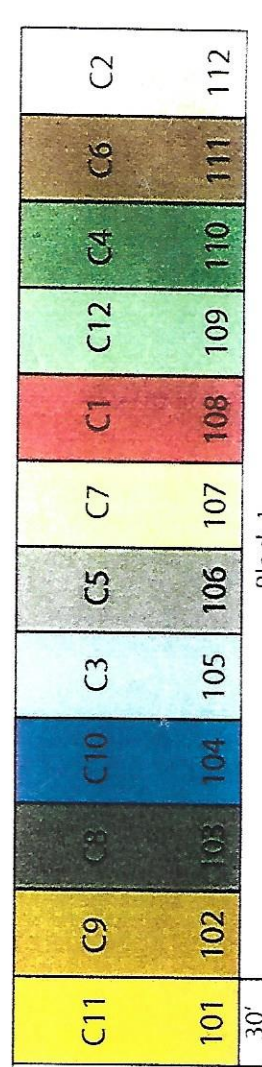
Block 4



Block 3

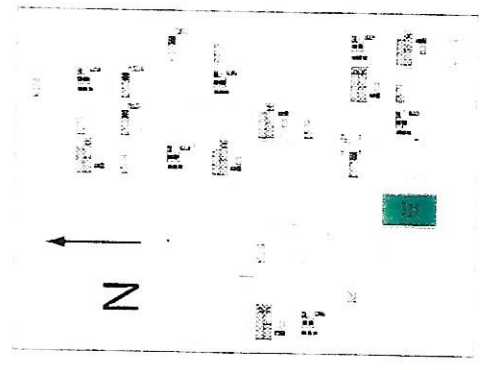


Block 2



Block 1

Location within main LTER site



94 ft

95

95 ft

92

96 ft

40' (12.2 m)

90' (27.4 m)

30' (9.1 m)