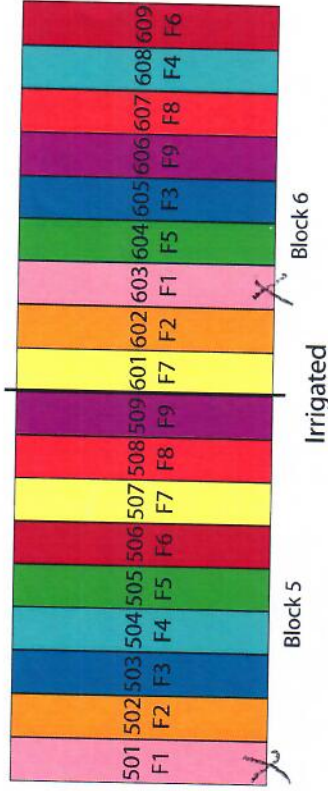
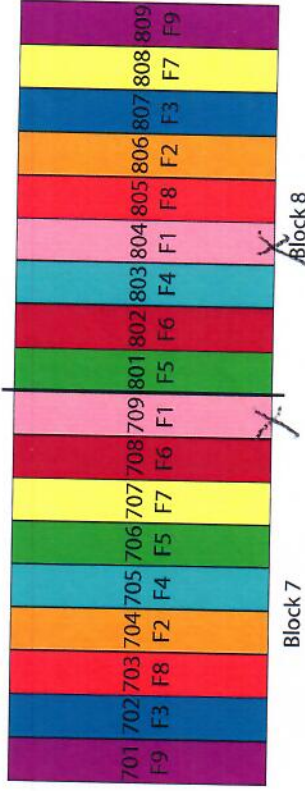
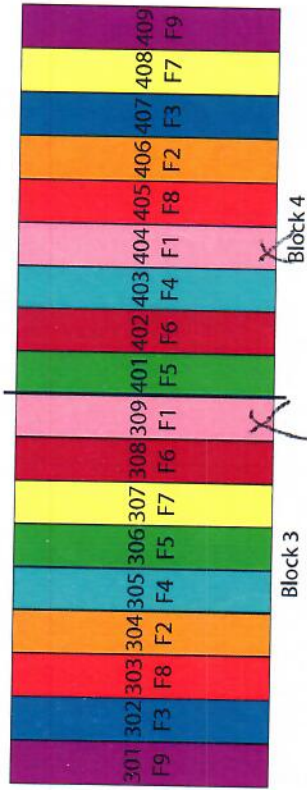


May 10, 2011

# KBS LTER Nitrogen Fertility/Irrigation Experiment



## Nitrogen Amounts in Corn Crop Years

Treatment	F1	F2	F3	F4	F5	F6	F7	F8	F9
N(lb/a)	0	30	60	90	120	150	180	220	260
N(kg/ha)	0	34	67	101	135	168	202	246	291

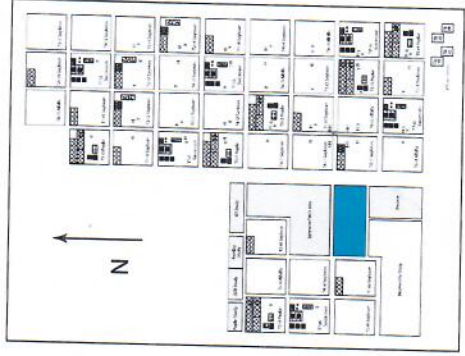
## Nitrogen Amounts in Winter Wheat Years

Treatment	F1	F2	F3	F4	F5	F6	F7	F8	F9
N(lb/a)	0	20	40	60	80	100	120	140	160
N(kg/ha)	0	23	45	67	90	112	135	157	180

All treatments established May 2005  
Each plot is 15' x 90' (4.6 x 27.4 m)

Ave. Pop seeding rate 29 K  
Ave Spacing 7.2"  
Area planted 3.2 A

## Location within main LTER site



Planted on May 10, 2011

LIER N-rate

80,000 SEEDS/UNIT



Hybrid Seed Corn

DKC52-59

BRAND (VT3)

RELATIVE MATURITY: OVERALL - 102

GROWING DEGREE UNITS	
MID-POLLINATION: 1280	BLACK LAYER: 2540
LOT NO: 748REK3JX	
VARIETY: 4688380	PURE SEED 99 00%
KIND: FIELD CORN	OTHER CROP SEED 0 60%
DATE TESTED: 11/10	NOXIOUS WEEDS/LB NONE
GERM 95%	INERT MATTER 0 40%
ORIGIN MI	WEED SEED 0 00%
TREATMENT: WAIH1	SUGGESTED PLATE
	JD B1
	CIH C1X

This is a product of MONSANTO's research program offering unique genetic characteristics for specific grower needs and protected by U.S. patent(s) 7,166,780



(01) 0 0070 183424764 (10) 748REK3JX



10648328 -- 80,000 SEEDS/UNIT -- PM -- AR2

YieldGard VT Triple



FIRST AID: If in Eyes: Hold eye open and rinse slowly and gently with water for 15-20 minutes. Remove contact lenses, if present, after the first 5 minutes, then continue rinsing eye. If on Skin or Clothing: Take off contaminated clothing. Rinse skin immediately with plenty of water. Use soap if available. If Swallowed: Call poison control center or doctor immediately for treatment advice. Have person sip a glass of water if able to swallow. Do not induce vomiting unless told to do so by the poison control center or doctor. Do not give anything by mouth to an unconscious person. If Inhaled: Move person to fresh air. If person is not breathing, call 911 or an ambulance, then give artificial respiration, preferably by mouth-to-mouth, if possible. Call a poison control center or doctor for further treatment advice. For emergency medical treatment information, Call Collect Day or Night: (314) 694-4000.

Hazards to Humans and Animals: Harmful if swallowed, inhaled, or absorbed through skin. Ingestion of treated seed may be hazardous to domestic animals and livestock. Treated seed exposed on soil surface may be hazardous to birds, fish and other wildlife.

Personal Protective Equipment: Minimize skin contact by wearing protective clothing such as long-sleeved shirt, long pants, socks plus shoes, chemical-resistant gloves and protective eyewear when handling treated seed. Handle treated seed in a well ventilated area. Avoid breathing dust. Avoid contact with eyes, skin and clothing. Remove contaminated clothing and wash with detergent and water before reuse. Wash hands and face before eating, drinking or smoking.

Disposal: Cover or collect treated seeds spilled during loading. Dispose of all excess treated seed. Leftover treated seed may be doublesown around headland or buried away from water sources in accordance with local requirements. Do not contaminate water bodies when disposing of planting equipment washwaters. Dispose of treated seed packaging in accordance with local requirements.

WARNING: KEEP OUT OF REACH OF CHILDREN. THIS SEED HAS BEEN TREATED WITH SEED PROTECTANTS CODED BELOW AT THE PRODUCT'S LABELED RATE. DO NOT USE FOR FOOD, FEED OR OIL PROCESSING PURPOSES. DO NOT REUSE EMPTY SACKS. STORE AWAY FROM FEED AND OTHER FOODSTUFFS.

CODE	PROTECTANT
A	Metalaxyl
D	Azoxystrobin
H1	Clothianidin* 250
H2	Clothianidin* 500
H3	Clothianidin* 1250
I	Trifloxystrobin
M	Fludioxonil
X	Mefenoxam
W	Ipcnazole

Azoxystrobin-treated seed (Dynasty): The active ingredient, Azoxystrobin, in this product can be persistent for several months or longer. Azoxystrobin has degradation products which have properties similar to chemicals which are known to leach through soil to groundwater under certain conditions as a result of agricultural use. Use of this chemical in areas where soils are permeable, particularly where the water table is shallow may result in groundwater contamination. This pesticide is toxic to freshwater and estuarine/marine fish and aquatic invertebrates. Drift and runoff may be hazardous to aquatic organisms in neighboring areas. Do not contaminate water when disposing of equipment washwater or rinsate.

Clothianidin-treated seed (Poncho® 600): Areas planted with this treated seed may be replanted immediately with field corn, popcorn, sweet corn, rapeseed or canola. These areas may also be replanted after 30 days with cereal grains, grasses, non-grass animal feeds, soybeans, dried beans, or root and tuber vegetables. These areas may be replanted after 8 months with sugar cane. Do not plant any other crop in the area for at least one year after treated seeds are planted.

Trifloxystrobin-treated seed (Trilex): Treated areas may be replanted immediately with any crop for which a tolerance exists for Trifloxystrobin. All crops without Trifloxystrobin tolerances may be planted 30 days after seeding of Trifloxystrobin-treated seed.

Fludioxonil/Mefenoxam-treated seed (Maxim XL): Corn and sorghum forage may not be grazed until 30 days after planting.

Mefenoxam-treated seed (Apron XL LX): Mefenoxam is known to leach through soil into groundwater under certain conditions as a result of agricultural use. Use of this chemical in areas where soils are permeable, particularly where the water table is shallow, may result in groundwater contamination.

Call 1-800-8 DEKALB (1-800-833-5252) with any questions, feedback or additional seed needs.

NOTICE: See bag for limitation of warranties, liability and remedies. Monsanto Company, 800 N. Lindbergh Blvd., - St. Louis, MO 63167

NET WEIGHT PRINTED ON BAG

4008813-38/53

©2010 MONSANTO COMPANY



4008813-38/53