

2010 Protocol for Biodiversity Study  
 LTER at Kellogg Biological Station, Michigan State University

System	Treatment	----- Plot Numbers -----				----- Crop Rotation -----
		Rep 1	Rep 2	Rep 3	Rep 4	
A	B1	106	201	303	401	Fall Fallow
A	B2	102	206	316	402	Spring Fallow
B	B3	111	203	306	403	Soybeans <sub>cover B</sub> – Wheat <sub>covers A &amp; C</sub> – Corn <sub>covers A &amp; C</sub>
B	B4	104	220	307	404	Wheat <sub>covers A &amp; C</sub> – Corn <sub>covers A &amp; C</sub> – Soybeans <sub>cover B</sub>
B	B5	114	217	312	405	Corn <sub>covers* A &amp; C</sub> – Soybeans <sub>cover B</sub> – Wheat <sub>covers A &amp; C</sub>
C	B6	107	207	317	406	Soybeans – Wheat <sub>cover A</sub> – Corn <sub>cover A</sub>
C	B7	105	219	305	407	Wheat <sub>cover A</sub> – Corn <sub>cover A</sub> – Soybeans
C	B8	118	214	310	408	Corn <sub>cover A</sub> – Soybeans – Wheat <sub>cover A</sub>
D	B9	119	205	314	409	Soybeans – Wheat – Corn
D	B10	117	209	320	410	Wheat – Corn – Soybeans
D	B11	110	216	309	411	Corn – Soybeans – Wheat
E	B12	109	202	313	412	Corn – Soybeans
E	B13	113	212	319	413	Soybeans – Corn
E	B14	115	204	304	414	Wheat – Soybeans
F	B15	112	213	301	415	Corn <sub>cover A</sub> – Corn <sub>cover A</sub> – Corn <sub>cover A</sub>
F	B16	101	210	308	416	Soybeans <sub>cover C</sub> – Soybeans <sub>cover C</sub> – Soybeans <sub>cover C</sub>
F	B17	116	211	302	417	Wheat <sub>cover A</sub> – Wheat <sub>cover A</sub> – Wheat <sub>cover A</sub>
G	B18	108	208	311	418	Corn – Corn – Corn
G	B19	103	218	315	419	Soybeans – Soybeans – Soybeans
G	B20	120	215	318	420	Wheat – Wheat – Wheat
H	B21	100	200	300	421	Continuous Fallow

\*Cover A: Red Clover  
 Cover B: Crimson Clover  
 Cover C: Cereal Rye

System	----- Descriptions -----
A	Fallow system: No crop is planted. Plots are tilled once a year.
B	One annual crop with two cover crops. Three year crop rotation.
C	One annual crop with one cover crop. Three year crop rotation.
D	One annual crop with no cover crop. Three year crop rotation.
E	One annual crop with no cover crop. Two year crop rotation.
F	One annual crop with one cover crop. Monoculture cropping system (no crop rotation).
G	One annual crop with no cover crop. Monoculture cropping system (no crop rotation).
H	Continuous fallow system: No cover, no crop growth. Plots are tilled as needed (2 - 6 times) a year to prevent plant growth from becoming established.

Research Objective: Incorporating biological diversity into weed management. Determine the impact of crop rotation and cover crops on weed communities in row crops.

Notes: **All plots will be managed like the LTER main site treatment 4 plots.**

No herbicides and no synthetic nitrogen will be used on any treatment.

This study was established in 2000. In 2000 and 2001 some treatments received fertilizer and herbicides.

Beginning in 2002 all treatments and plots have been treated like the LTER main site treatment 4, no herbicides and no synthetic fertilizer.

Plot size = 30' x 90' (9 meters x 27meters).



# KBS LTER Biodiversity Study

421 B21	420 B20	419 B19	418 B18	417 B17	416 B16
------------	------------	------------	------------	------------	------------

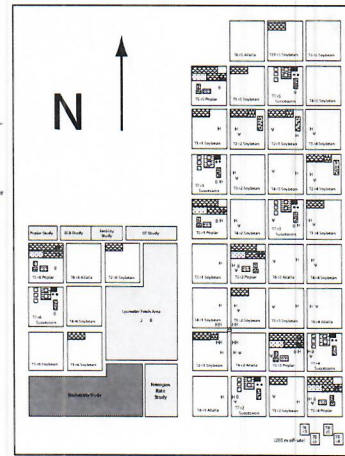


Block 4

Treatment	Description	System
B1	F <sub>fall</sub>	A
B2	F <sub>spring</sub>	A
B3	C <sub>cov2</sub> - S - W <sub>cov2</sub>	B
B4	S - W <sub>cov2</sub> - C <sub>cov2</sub>	B
B5	W <sub>cov2</sub> - C <sub>cov2</sub> - S	B
B6	C <sub>cov1</sub> - S - W <sub>cov1</sub>	C
B7	S - W <sub>cov1</sub> - C <sub>cov1</sub>	C
B8	W <sub>cov1</sub> - C <sub>cov1</sub> - S	C
B9	C - S - W	D
B10	S - W - C	D
B11	W - C - S	D
B12	C - S	E
B13	S - C	E
B14	W - S	E
B15	C <sub>cov1</sub>	F
B16	S <sub>cov1</sub>	F
B17	W <sub>cov1</sub>	F
B18	C	G
B19	S	G
B20	W	G
B21	T	H

10/21/2010  
SEED CEREAL  
RYE @ 121#/A.  
1<sup>st</sup>. B16  
2<sup>nd</sup>. B4  
3<sup>rd</sup>. B5

Location within main LTER site



## Description Key

- F = Fallow
- S = Soybean
- C = Corn
- W = Wheat (red)
- T = Tilled and cultivated
- cov1 = 1-species cover (legume)
- cov2 = 2-species cover (legume + small grain)

System Key	Trt	Total Species	Species/year
A	B1-2	10	5-7
B	B3-5	5	1-3
C	B6-8	4	1-2
D	B9-11	3	1
E	B12-14	2	1
F	B15-17	2	2
G	B18-20	1	1
H	B21	0	0

All treatments established May 2003  
Each plot is 30' X 90' (9.1m x 27.4m)

# CERTIFIED SEED



Crop and Variety	WHEELER Rye			
Vendor	Moore Seed Farm			
Address	Elsie MI 49831			
Lot No.	C 10 6060 2950-10F			
Purity	99.70	% Net Wt.	56/25.4	Lbs./Kg
Inert	00.28	%	Date	7/10
Weeds	00.01	%	Germ.	85 %
Other Crop	00.01	%	Seed Count	----- /b.

471

MEMBER OF ASSOCIATION OF OFFICIAL SEED CERTIFYING AGENCIES

## MICHIGAN CERTIFIED SEED

This tag is void unless printed thereon is an analysis showing data required by Michigan law. The seed in this container is from a lot of seed which the vendor warrants was produced and processed by vendor, and inspected at the vendor's request by the Michigan Crop Improvement Association, the officially designated seed certifying agency of the state of Michigan, and done so in accordance with regulations of the Michigan Department of Agriculture, Regulation No. 623, as amended.

The Michigan Crop Improvement Association makes no warranty of any kind, express or implied, which extends beyond the certification that samples of seeds from the seed lot, as submitted by the vendor, met the regulations of the State of Michigan. The producer or vendor whose name appears on the analysis label is solely responsible for the information thereon, the product contained therein, and for the proper use of this certification label.

SAVE THIS TAG AS A REFERENCE